



# Front End and Wafer Handling Products Catalog





# About Us



Established in 1999 by a team of semiconductor industry veterans, ePAK is a full-service designer, manufacturer and supplier of precision engineered products and solutions for the automated transport and handling of semiconductor and electronic devices. Our product areas include front-end wafer handling, back-end IC transport, and end-system sub-assembly handling. Our products are sold globally to top tier global customers including semiconductor companies, system OEMs, and IC assembly and test operations. Our large-scale manufacturing and design centers in Shenzhen & Wuhu China are centrally located to the semiconductor industry's back-end activities and supports a global network of JIT distribution centers. ePAK's corporate headquarters is located in Austin, Texas and we maintain nine sales and applications engineering offices worldwide.

Device protection and contamination control begins at the wafer fab and extends to the assembly site. ePAK never forgets that the most valuable product in the semiconductor and electronics industry is also the most fragile and susceptible to mishandling and contamination. Not all wafers are created equal...with back-grinding, unique material sets, and exotic semiconductor processes, one product does not fit all wafers.



From ePAK's most advanced eLX wafer canisters to cost efficient wafer jars, ePAK tailor fits their products to meet your requirements.

- Expanding constantly to meet increasing demand
- Semiconductor & electronics packaging market focused
- Customer driven product development
- Over 130 injection molding lines
- Full range of materials available
- 12 cleaning lines for wafer products
- 4 class 100 clean rooms (over 4500 sq. meters)



<i>Products</i>	<i>Pages</i>
<b>1" / 1.5" / 2" / 2.5" / 3" / 3.25" / 3.54"</b>	
* Single Wafer Shippers	<a href="#">35</a>
* 25 Wafer Shipping Boxes	<a href="#">13, 14</a>
* Process Boats	<a href="#">22, 26, 27</a>
* Storage Boxes	<a href="#">22</a>
* Envelopes	<a href="#">32</a>
* OverPAKs™	<a href="#">36, 61,</a>
<b>4" (100mm)</b>	
* Single Wafer Shippers	<a href="#">35</a>
* 25 Wafer Shipping Boxes	<a href="#">13, 14, 15</a>
* Wafer Jars	<a href="#">6</a>
* Process Boats	<a href="#">22, 26, 27</a>
* Storage Boxes	<a href="#">22</a>
* Envelopes	<a href="#">32</a>
* OverPAKs	<a href="#">36, 61-62,</a>
<b>5" (125mm)</b>	
* Single Wafer Shippers	<a href="#">35</a>
* 25 Wafer Shipping Boxes	<a href="#">15</a>
* Wafer Canisters	<a href="#">5</a>
* Wafer Jars	<a href="#">6</a>
* Process Boats	<a href="#">23, 27</a>
* Storage Boxes	<a href="#">23, 20</a>
* Envelopes	<a href="#">32</a>
* OverPAKs™	<a href="#">61-62,</a>

<i>Products</i>	<i>Pages</i>
<b>6" (150mm)</b>	
* Single Wafer Shippers	<a href="#">35, 37, 39</a>
* 25 Wafer Shipping Boxes	<a href="#">13, 14-15</a>
* Wafer Canisters	<a href="#">4-5</a>
* Wafer Jars	<a href="#">6</a>
* Process Boats	<a href="#">24, 26, 28</a>
* ePOD™ PRO	<a href="#">21</a>
* Storage Boxes	<a href="#">24, 30</a>
* OverPAKs™	<a href="#">37, 61-62</a>
* Envelopes	<a href="#">32</a>
<b>8" (200mm)</b>	
* Single Wafer Shippers	<a href="#">37, 38, 39</a>
* 25 Wafer Shipping Boxes	<a href="#">15</a>
* Wafer Canisters	<a href="#">4-5</a>
* Wafer Jars	<a href="#">6</a>
* Process Boats	<a href="#">25, 26, 28</a>
* ePOD™ PRO	<a href="#">21</a>
* Storage Boxes	<a href="#">25, 31</a>
* OverPAKs™	<a href="#">61-62</a>
* Envelopes	<a href="#">32</a>
<b>12" (300mm)</b>	
* Single Wafer Shippers	<a href="#">37, 39</a>
* Wafer Canisters	<a href="#">4-5</a>
* Wafer Jars	<a href="#">6</a>
* eFOSB-300-A™	<a href="#">16-17</a>
* eFOUP-300-A™	<a href="#">18-19</a>
* OverPAKs™	<a href="#">59-61</a>
<b>18" (450mm)</b>	
* Single Wafer Shippers	<a href="#">38</a>

<i>Products</i>	<i>Pages</i>
<b>Internal Canister/Jar Cushioning</b>	
* Separators/Interleaf	<a href="#">7</a>
* Ring Separators	<a href="#">8</a>
* Foam Disks	<a href="#">9</a>
* Foam Liners for Wafer Jars	<a href="#">10</a>
* ePAD™ Wafer Protection System	<a href="#">11-12</a>
<b>Film / Flex Frames</b>	
* Film / Flex Frames	<a href="#">41, 42</a>
* Film Frame OverPAKs™	<a href="#">62</a>
* Film Frame Single Shippers	<a href="#">43</a>
* Film Frame Multi-Shippers	<a href="#">44</a>
* Film Frame Canisters	<a href="#">45</a>
* Film Frame Canister Accessories	<a href="#">46-47</a>
* Film Frame FOUP	<a href="#">20</a>
<b>Grip / Hoop Rings</b>	
* Grip / Hoop Rings	<a href="#">48-49</a>
* Shippers	<a href="#">50</a>
<b>Chip Trays</b>	
* Chip Trays & Accessories	<a href="#">52-58</a>
<b>Bags</b>	
* Clean Room	<a href="#">64, 65,</a>
* Moisture Barrier	<a href="#">66-67</a>
<b>Handles</b>	
* Handles for Process Boats	<a href="#">35</a>
<b>Glass Substrate Shippers</b>	<a href="#">51</a>
<b>Laser Marking</b>	<a href="#">59</a>
<b>Badge Holders &amp; Clips</b>	<a href="#">33</a>



# eLX™ WAFER CANISTERS\*

- Enhanced protection of wafer surfaces
- Minimizes lateral movement without applying compression to delicate wafer edges
- Advanced design minimizes particle generation
- Secure 4 latch system (with 2 latch option)
- Impact resistant design
- Large label areas
- Interfaces with industry robotic handling equipment
- Drop-in replacement for old industry designs
- Protective shipping OverPAKs available...[see products](#)



## Wafer canister part numbers and ordering information:

Wafer Size	ePAK Order Code	ePAK Description	Internal Diameter	Internal Height	Corner Latches #	Outside Base Size	Std Pack Quantity
6"	<b>eWB0086-2-x</b>	eCT-LX6/150-2-44-R.1-x	151 mm	44 mm (1.73")	2	174.5mm x 174.5mm	10/carton
6"	<b>eWB0086-4-x</b>	eCT-LX6/150-4-44-R.1-x	151 mm	44 mm (1.73")	4	174.5mm x 174.5mm	10/carton
6"	<b>eWB0019-2-x</b>	eCT-LX6/150-2-44-x	151 mm	44 mm (1.73")	2	225mm x 225mm	10/carton
6"	<b>eWB0019-4-x</b>	eCT-LX6/150-4-44-x	151 mm	44 mm (1.73")	4	225mm x 225mm	10/carton
6"***	<b>eWB0435-4-x</b>	eCT-LX-6/150-4-66-x	150.8 mm	66 mm (2.6")	4	174.5mm x 174.5mm	10/carton
8"	<b>eWB0018-2-x</b>	eCT-LX8/200-2-44-x	201 mm	44 mm (1.73")	2	225mm x 225mm	10/carton
8"	<b>eWB0018-4-x</b>	eCT-LX8/200-4-44-x	201 mm	44 mm (1.73")	4	225mm x 225mm	10/carton
8"	<b>eWB0383-4-x</b>	eCT-LX-8/200-4-69-x	200.8 mm	69 mm (2.72")	4	225mm x 225mm	10/carton
8" **	<b>eWB0516-4-x</b>	eCT-LX-8/200-4-69-R.3-x	200.8 mm	69 mm (2.72")	4	225mm x 225mm	10/carton
8" ** (note 2)	<b>eWB0582-4-x</b>	eCT-LX-8/200-4-69-R.4-x	200.8 mm	69 mm (2.72")	4	225mm x 225mm	10/carton
12"	<b>eWB0026-4-x</b>	eCT-LX12/300-4-44-x	301.5 mm	44 mm (1.73")	4	326mm x 326mm	12/carton
12"***	<b>eWB0371-4-x</b>	eCT-LX12/300-4-71-x	301.2 mm	71 mm (2.79")	4	326mm x 326mm	8/carton

\*\* FHRS & Standard Ring separator compatible canisters ([Pg. 8](#))

(PATENTS: US #6988620, PRC #ZL 03 2 07820 X, Singapore #106157, Taiwan # I299315, Japan #4383808)

Note 2: Latches are outside enclosure

**eFORM™** – Clean Adjustable Platform option to minimize vertical movement (–x in P/N):

Wafer Size	ePAK Order Code	ePAK Description	Diameter	Adjustable Height	Std Pack Quantity
6"	<b>eOP0042-x</b>	eAP6-150-16-x	150 mm	16 mm	10/pack
8"	<b>eOP0041-x</b>	eAP8-200-16-x	200 mm	16 mm	10/pack
12"	<b>eOP0045-x</b>	eAP12-300-16-x	300 mm	16 mm	10/pack



**Material code options:** (–x in P/N):

Material	Code	SR
Conductive PP	eM-01-BLK	10e4-10e5

-A wide range of cushion disks and wafer separators are available-

[RETURN TO TABLE OF CONTENTS](#)

# STANDARD WAFER CANISTERS

- For high-security transit of wafers
- Designed for stacking
- Quick release snap-lock design for lid removal
- Recessed slots for easy loading and unloading
- Wafer loader machine compatible with most industry equipment
- Protective shipping OverPAKs available...[see products](#)



## Wafer canister part numbers and ordering information:

Wafer Size	ePAK Order Code	ePAK Description	Internal Diameter	Internal Height	Corner Latches #	Std Pack Quantity
5" **	<b>eWB0055-2-x</b>	eLC-TI5/125-2-x	127 mm	28 mm (1.1")	2	20/carton
5" **	<b>eWB0055-4-x</b>	eLC-TI5/125-4-x	127 mm	28 mm (1.1")	4	20/carton
6" **	<b>eWB0102-2-x</b>	eLC-TI6/150-2-x	152 mm	28 mm (1.1")	2	20/carton
6"	<b>eWB0007-x</b>	eCT-152-26-x	152 mm	26 mm (1.1")	2	30/carton
8" **	<b>eWB0075-2-x</b>	eLC-TI8/200-2-x	202 mm	28 mm (1.1")	2	20/carton
8" **	<b>eWB0075-4-x</b>	eLC-TI8/200-4-x	202 mm	28 mm (1.1")	4	20/carton
8"	<b>eWB0004-x</b>	eCT-202-30-x	202 mm	30 mm (1.2")	2	20/carton
8"	<b>eWB0234-2-x</b>	eCT8/200-38-2-x	202 mm	38 mm (1.5")	2	20/carton
8"	<b>eWB0234-4-x</b>	eCT8/200-38-4-x	202 mm	38 mm (1.5")	4	20/carton
8"	<b>eWB0585-x</b>	eCT8/200-13.6-x	202 mm	8 mm (0.3")	4	20/carton
12" **	<b>eWB0009-x</b>	eCT-303-21-x	303 mm	21 mm (0.9")	4	10/carton

(\*\* Patented "Double Ring" design)

## Material code options: (-x in P/N):

Material	Code	SR
Conductive PP	eM-01-BLK	10e4-10e5
Natural PP	eM-08-NAT	n/a

- A wide range of cushion disks and wafer separators are available

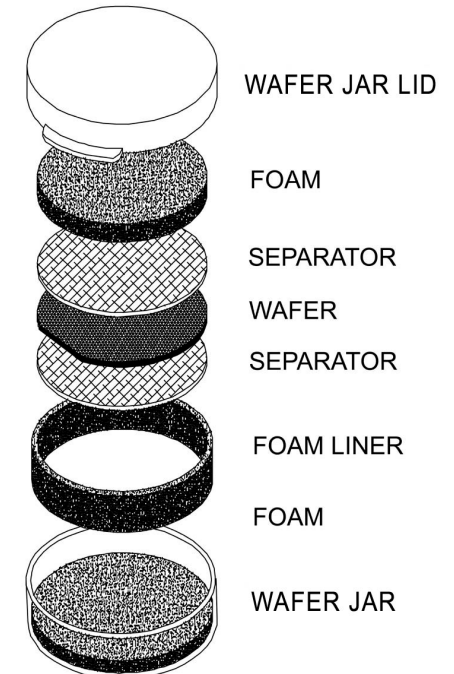
[RETURN TO TABLE OF CONTENTS](#)

- Easy loading/unloading in automated or manual applications
- Impact resistant containers feature a snap-on lid for secure packing
- Available in both conductive PP and natural (non-conductive) PP materials
- A wide range of cushion disks, jar liners and wafer separators are available
- Overpaks available...[see products](#)

# WAFER JARS

## Wafer Jar part numbers and ordering information:

Wafer Size	ePAK Order Code	ePAK Description	Internal Diameter	Internal Height	Std Pack Quantity
4"	eWB0040-x	eJR4-100-23-x	111 mm	23 mm (0.9")	200/carton
4"	eWB0044-x	eJR4-100-32-x	111 mm	32 mm (1.3")	200/carton
4"	eWB0038-x	eJR4-100-49-x	117 mm	49 mm (1.9")	100/carton
4"	eWB0041-x	eJR4-100-60.5-x	111 mm	60.5 mm (2.4")	100/carton
5"	eWB0072-x	eJR5-125-38-x	142 mm	38 mm (1.5")	100/carton
5"	eWB0128-x	eJR5-125-49-x	142 mm	49 mm (1.9")	100/carton
5"(Note #1)					
5"(Note #2)		-			
5" (Note #3)		-			
6"	eWB0033-x	eJR6-150-20-x	167 mm	20 mm (0.8")	100/carton
6"	eWB0001-x	eJR-170-38-x	167 mm	38 mm (1.5")	100/carton
6"	eWB0150-x	eJR6-150-49-x	167 mm	49 mm (1.9")	100/carton
6"	eWB0008-x	eJR-167-76-x	167 mm	76 mm (3")	60/carton
6" (eLX style, see Note 5)	eWB0586-x	eJR6-150-38-x	151 mm	38 mm (1.5")	100/carton
8"	eWB0035-x	eJR8-200-23-x	235 mm	23 mm (0.9")	40/carton
8"	eWB0010-x	eJR-235-51-x	235 mm	51 mm (2")	20/carton
8" (eLX style, see Note 5)	eWB0579-x	eJR8-200-51-x	235 mm	51 mm (2")	20/carton
12"(Note #4)	eWB0054-x	eJR12-300-23-x	303 mm	23 mm (0.9")	10/carton



**Note #1:** Additional 5"x 20mm option for wafers utilize the 6" (eJR-150-20-X) Jar, 6" (eFL6-518-19-6-eM-04-H-PNK) Liner, and the 5"(eFL5-474-19-13-eM-04-H-PNK) Liner

**Note #2:** Additional 5"x 38mm option for wafers utilize the 6" (eJR-170-38-X) Jar, 6" (eFL6-518-37-6- eM-04-H-PNK) Liner, and the 5"(eFL5-474-37-13-eM-04-H-PNK) Liner

**Note #3:** Additional 5"x 76mm option for wafers utilize the 6" (eJR-167-76-X) Jar, 6" (eFL6-518-75-6- eM-04-H-PNK) Liner, and the 5"(eFL5-474-75-13-eM-04-H-PNK) Liner

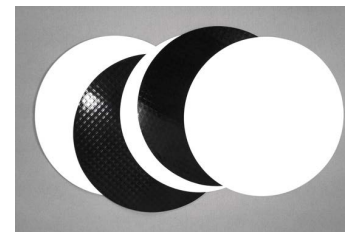
**Note #4:** Patented "Double Ring" design does not require a foam liner

**Note #5:** Patented "eLX" style internal features reduce lateral movement and do not require a foam liner

## Material code options: (-x in P/N):

Material	Code	SR
Conductive PP	eM-01-BLK	10e4-10e5
Natural PP	eM-08-NAT	n/a

[RETURN TO TABLE](#)  
[OF CONTENTS](#)



**Wafer Separators** – (Interleaf) for use between individual wafers

## Anti-static spun PO (Tyvek®):

Wafer Size	ePAK Order Code	ePAK Description	Interleaf Diameter	Separator Thickness	Std Pack Quantity
4"	<b>eIL0010-eM-03-A-WHT</b>	eIL4-100-0.16-eM-03-A-WHT	100 mm	0.16 mm (.006")	250/pack
5"	<b>eIL0007-eM-03-A-WHT</b>	eIL5-125-0.16-eM-03-A-WHT	125 mm	0.16 mm (.006")	250/pack
6"	<b>eIL0005-eM-03-A-WHT</b>	eIL6-150-0.16-eM-03-A-WHT	150 mm	0.16 mm (.006")	250/pack
8"	<b>eIL0004-eM-03-A-WHT</b>	eIL8-200-0.16-eM-03-A-WHT	200 mm	0.16 mm (.006")	250/pack
12"	<b>eIL0006-eM-03-A-WHT</b>	eIL12-300-0.16-eM-03-A-WHT	300 mm	0.16 mm (.006")	250/pack

## Carbon Separator (Conductive PS):

Wafer Size	ePAK Order Code	ePAK Description	Interleaf Diameter	Separator Thickness	Std Pack Quantity
4"	<b>eIL0023-eM-20-BLK</b>	eIL4-100-0.07-eM-20-BLK	100 mm	0.07 mm (.003")	200/pack
4"	<b>eIL0009-eM-20-BLK</b>	eIL4-100-0.13-eM-20-BLK	100 mm	0.13 mm (.005")	200/pack
5"	<b>eIL0024-eM-20-BLK</b>	eIL5-125-0.07-eM-20-BLK	125 mm	0.07 mm (.003")	200/pack
5"	<b>eIL0008-eM-20-BLK</b>	eIL5-125-0.13-eM-20-BLK	125 mm	0.13 mm (.005")	200/pack
6"	<b>eIL0016-eM-20-BLK</b>	eIL6-150-0.07-eM-20-BLK	150 mm	0.07 mm (.003")	200/pack
6"	<b>eIL0002-eM-20-BLK</b>	eIL6-150-0.13-eM-20-BLK	150 mm	0.13 mm (.005")	200/pack
8"	<b>eIL0022-eM-20-BLK</b>	eIL8-200-0.07-eM-20-BLK	200 mm	0.07 mm (.003")	200/pack
8"	<b>eIL0001-eM-20-BLK</b>	eIL8-200-0.13-eM-20-BLK	200 mm	0.13 mm (.005")	200/pack
12"	<b>eIL0003-eM-20-BLK</b>	eIL12-300-0.16-eM-20-BLK	300 mm	0.16 mm (.006")	150/pack

## Material code info:

Material	Code	SR
Anti-static spun PO (Tyvek®)	eM-03-A-WHT	10e6-10e11
Proprietary conductive PS	eM-20-BLK	10e4-10e11

[RETURN TO TABLE OF CONTENTS](#)

# RING SEPARATORS

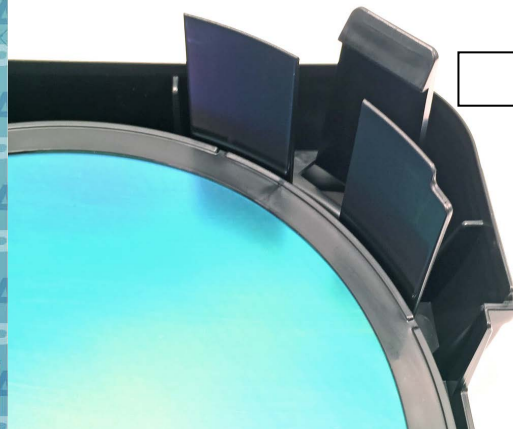
- Ring Separators are used when a surface contact is not preferred. Outer raised edge of the ring contacts only the wafer outer circumference on its active surface.
- Ring separators are only for use in "eLX" style canisters as they require lateral movement to be minimized.
- The eLX canisters, eWB0383 & (200mm) and eWB0516mWB0371 (300mm) are designed for 25 wafers when using Ring Separators.
- "Fixed Height Ring Separators" (FHRS) are designed to self-stack. They always have same # of rings per canister & the stacking feature removes weight of wafer stack from individual wafers.

Wafer Size	ePAK Order Code	ePAK Description	Separator Diameter	Separator Thickness	Std Pack Quantity
<b>STANDARD RING SEPARATORS (uses wafers thickness to establish separation)</b>					
6" (150mm)	<b>eRS0003-eM-01-BLK</b>	150MM COIN STACK RING SEPARATOR-eM-01-BLK	150 mm	1.75 mm	1200/box
8" (200mm)	<b>eRS0001-eM-01-BLK</b>	200MM COIN STACK RING SEPARATOR-eM-01-BLK	200 mm	1.75 mm	600/box
8" (200mm)	<b>eRS0005-eM-01-BLK</b>	200MM COIN STACK RING SEPARATOR-R.1-eM-01-BLK	200 mm	1.20 mm	600/box
8" (200mm)	<b>eRS00013-eM-01-BLK</b>	200MM COIN STACK RING SEPARATOR R.5-eM-01-BLK	200 mm	2.80 mm	600/box
8" (200mm)	<b>eRS00016-eM-01-BLK</b>	200MM COIN STACK RING SEPARATOR R.6-eM-01-BLK	200 mm	2.90 mm	600/box
12" (300mm)	<b>eRS0002-eM-01-BLK</b>	300MM COIN STACK RING SEPARATOR-eM-01-BLK	300 mm	1.75 mm	200/box
<b>FHRS (Fixed Height Ring Separators)** -Uses outside stacking supports to provide separation and minimize stack pressure on wafers</b>					
*6" (150mm)	<b>eRS0023-eM-01-BLK</b>	eFHRS-150-R.2-eM-01-BLK (*See Note #1 below)	150mm	2.28 mm	52/carton
*8" (200mm)	<b>eRS0024-eM-01-BLK</b>	eFHRS-200-eM-01-BLK (*See Note #2 below)	200 mm	3.40 mm	52/carton
8"(200mm)	<b>eRS0026-eM-01-BLK</b>	eFHRS-200-R.1-eM-01-BLK ( for <1.20mm thickness wafers)	200 mm	3.32 mm	52/carton
8"(200mm)	<b>eRS0028-eM-01-BLK</b>	eFHRS-200-R.2-eM-01-BLK (for <0.90mm thickness wafers)	200 mm	3.47 mm	52/carton
*12" (300mm)	<b>eRS0015-eM-01-BLK</b>	eFHRS-300-eM-01-BLK (*See Note #3 below)	300 mm	3.75 mm	26/carton
<p><i>*Note #1- Fixed Height Ring Separator design. Only designed for use with eWB0435-4-x wafer canister.</i></p> <p><i>*Note #2- Fixed Height Ring Separator design. Only designed for use with eWB0516-4-x wafer canister.</i></p> <p><i>*Note #3- Fixed Height Ring Separator design. Only designed for use with eWB0371-4-x wafer canister.</i></p>					

### Material code:

Material	Code	SR
Conductive PP	eM-01-BLK	10e4-10e5

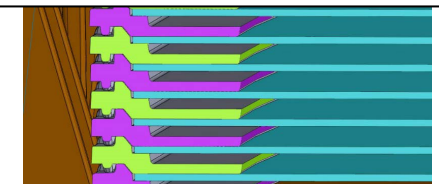
\*\*PATENT PENDING



STANDARD RING SEPARATOR



FIXED HEIGHT RING SEPARATOR



[RETURN TO TABLE OF CONTENTS](#)



# FOAM PACKING MATERIALS

## -FOAM CUSHION DISKS-

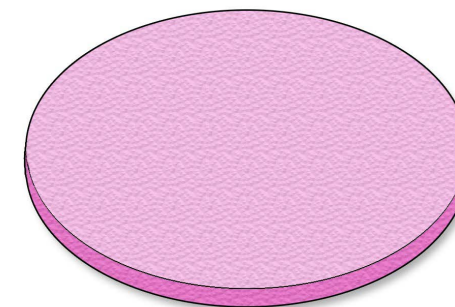
**Top/Bottom Cushion Disks** – ESD sensitive cushioning material for use with Canisters and Jars

Wafer Size	ePAK Order Code	ePAK Description	Foam Diameter	Foam Thickness	Std Pack Quantity
4"	<b>eFD0010-eM-04-H-PNK</b>	eFD4-100-3-eM-04-H-PNK	100mm	3 mm	100/pack
4"	<b>eFD0011-eM-04-H-PNK</b>	eFD4-100-6-eM-04-H-PNK	100mm	6 mm	50/pack
5"	<b>eFD0008-eM-04-H-PNK</b>	eFD5-125-3-eM-04-H-PNK	125mm	3 mm	100/pack
5"	<b>eFD0004-eM-04-H-PNK</b>	eFD5-125-6-eM-04-H-PNK	125mm	6 mm	50/pack
6"	<b>eFD0007-eM-04-H-PNK</b>	eFD6-150-3-eM-04-H-PNK	150mm	3 mm	100/pack
6"	<b>eFD0002-eM-04-H-PNK</b>	eFD6-150-6-eM-04-H-PNK	150 mm	6 mm	50/pack
8"	<b>eFD0006-eM-04-H-PNK</b>	eFD8-200-3-eM-04-H-PNK	200 mm	3 mm	100/pack
8"	<b>eFD0001-eM-04-H-PNK</b>	eFD8-200-6-eM-04-H-PNK	200 mm	6 mm	50/pack
***8"	<b>eFD0013-eM-04-H-PNK</b>	eFD8-205-3-eM-04-H-PNK	205 mm	3 mm	100/pack
***8"	<b>eFD0012-eM-04-H-PNK</b>	eFD8-205-6-eM-04-H-PNK	205 mm	6 mm	50/pack
12"	<b>eFD0009-eM-04-H-PNK</b>	eFD12-300-3-eM-04-H-PNK	300 mm	3 mm	100/pack
12"	<b>eFD0003-eM-04-H-PNK</b>	eFD12-300-6-eM-04-H-PNK	300 mm	6 mm	50/pack

\*\*\*FOR USE WITH WAFER JAR ONLY

### Material code options:

Material	Code	SR
Closed-cell polyethylene	eM-04-H-PNK	10e5-10e11



[RETURN TO TABLE OF CONTENTS](#)



# FOAM PACKING MATERIALS

## - JAR LINERS-

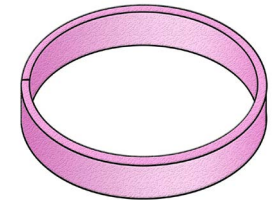
**Jar Liner** – ESD sensitive cushioning material for use with Wafer Jars only

Wafer Size	ePAK Order Code	ePAK Description	Foam Length	Foam Width	Foam Thickness	Std Pack Quantity
4"	eFL0022-eM-04-H-PNK	eFL4-345-22-3-eM-04-H-PNK	345 mm	22 mm	3 mm	25/pack
4"	eFL0028-eM-04-H-PNK	eFL4-345-31-3-eM-04-H-PNK	345 mm	31 mm	3 mm	25/pack
4"	eFL0023-eM-04-H-PNK	eFL4-362-48-6-eM-04-H-PNK	362 mm	48 mm	6 mm	25/pack
4"	eFL0029-eM-04-H-PNK	eFL4-345-59.5-3-eM-04-H-PNK	345 mm	59.5 mm	3 mm	25/pack
5"	eFL0039-eM-04-H-PNK	eFL5-435-37-6-eM-04-H-PNK	435 mm	37 mm	6 mm	25/pack
5"	eFL0056-eM-04-H-PNK	eFL5-435-48-6-eM-04-H-PNK	435 mm	48 mm	6 mm	25/pack
5" (see Note#1)	eFL0030-eM-04-H-PNK	eFL5-474-19-13-eM-04-H-PNK	474 mm	19 mm	13 mm	25/pack
5" (see Note#2)	eFL0007-eM-04-H-PNK	eFL5-474-37-13-eM-04-H-PNK	474 mm	37 mm	13 mm	25/pack
5" (see Note#3)	eFL0008-eM-04-H-PNK	eFL5-474-75-13-eM-04-H-PNK	474 mm	75 mm	13 mm	25/pack
6"	eFL0012-eM-04-H-PNK	eFL6-518-19-6-eM-04-H-PNK	518 mm	19 mm	6 mm	50/pack
6"	eFL0002-eM-04-H-PNK	eFL6-518-37-6-eM-04-H-PNK	518 mm	37 mm	6 mm	50/pack
6"	eFL0062-eM-04-H-PNK	eFL6-518-48-6-EM-04-H-PNK	518 mm	48 mm	6 mm	50/pack
6"	eFL0003-eM-04-H-PNK	eFL6-518-75-6-eM-04-H-PNK	518 mm	75 mm	6 mm	50/pack
8"	eFL0013-eM-04-H-PNK	eFL8-712-22-13-eM-04-H-PNK	712 mm	22 mm	13 mm	25/pack
8"	eFL0001-eM-04-H-PNK	eFL8-712-50-13-eM-04-H-PNK	712 mm	50 mm	13 mm	25/pack

**Notes#1** This 5" wafer configuration utilizes the 6"(eJR-167-20-X) Jar, 6" (eFL6-518-19-6-eM-04-H-PNK) Liner, and this 5"(eFL5-474-19-13-eM-04-H-PNK) Liner

**Notes#2** This 5" wafer configuration utilizes the 6"(eJR-167-38-X) Jar, 6" (eFL6-518-37-6-eM-04-H-PNK) Liner, and this 5"(eFL5-474-37-13-eM-04-H-PNK) Liner

**Notes#3** This 5" wafer configuration utilizes the 6"(eJR-167-76-X) Jar, 6" (eFL6-518-75-6-eM-04-H-PNK) Liner, and this 5"(eFL5-474-75-13-eM-04-H-PNK) Liner



### Material code options:

Material	Code	SR
Closed-cell polyethylene	eM-04-H-PNK	10e5-10e11

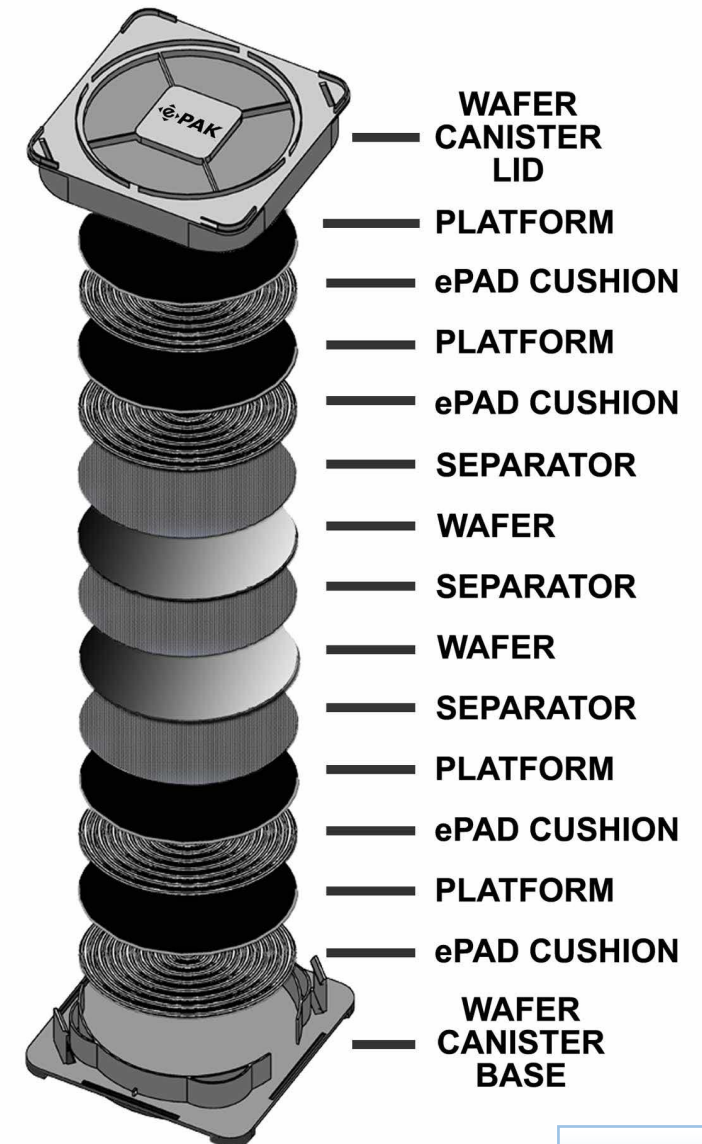
[RETURN TO TABLE OF CONTENTS](#)



# ePAD™ \* WAFER PROTECTION SYSTEM

## High performance alternative to foam-based solutions

- Made from proprietary, low-ionic, flexible, conductive polystyrene
- Ideal for both Cu and Al metallized wafers
- Best choice for both long and short term storage needs
- Available for 6", 8" and 12" wafer sizes



(PATENTS: US #7425362, Singapore #105587, Japan #4205540,  
Taiwan #I297662, PRC#ZL 03 2 07819.6)



[RETURN TO TABLE  
OF CONTENTS](#)

**ePAD™ Thermal Formed Wafer Cushion** – Particle free, vacuum formed, cushioning material for wafer stack

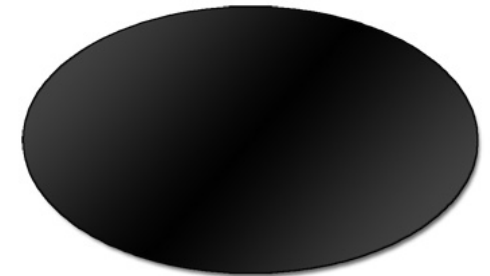
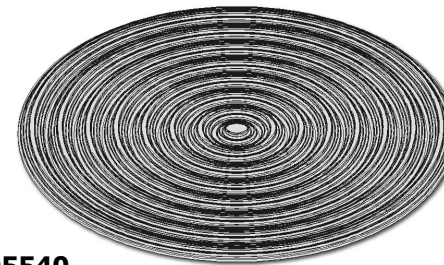
Wafer Size	ePAK Order Code	ePAK Description	Diameter	Thickness	Std Pack Quantity
6"	eVT0208-x	eWP6-150-3-x	150 mm	3 mm	50/box
6"	eVT0048-x	eWP6-150-5-x	150 mm	5 mm	50/box
8"	eVT0209-x	eWP8-200-3-x	200 mm	3 mm	50/box
8"	eVT0030-x	eWP8-200-5-x	200 mm	5 mm	50/box
12"	eVT0210-x	eWP12-300-5-x	300 mm	5 mm	50/box

**ePAD™ Wafer Platform** – Provides the flat surface required for the proper function of the ePAD system

Wafer Size	ePAK Order Code	ePAK Description	Diameter	Thickness	Std Pack Quantity
6"	eVT0049-x	eFP6-150-0.8-x	150 mm	0.8 mm	50/box
8"	eVT0050-x	eFP8-200-0.8-x	200 mm	0.8 mm	50/box
12"	eVT0211-x	eFP12-300-0.8-x	300 mm	0.8 mm	50/box

**Material code options for all ePAD™ Thermal Formed Wafer packing materials:** (-x in P/N):

Material	Code	SR
Proprietary conductive PS	eM-20-BLK	10e4-10e11



(PATENTS: US #7425362, Singapore #105587, Japan #4205540, Taiwan #I297662, PRC#ZL 03 2 07819.6)

[RETURN TO TABLE OF CONTENTS](#)



# VACUUM-FORMED WAFER SHIPPING BOXES

- Designed to hold 25 wafers by the edge
- Economical solution for small wafers
- 2 piece design includes Lid and Base



## Product info:

Wafer Size	ePAK Order Code	ePAK Description	Internal Diameter	Material Options
1"	<b>eVT0404-ASSY-1</b>	eV8-1/25-25-Base/Lid-0.8-ASSY-1	25 mm	eM-21
2"	<b>eVT0241-ASSY-#</b>	eV8-2/50-25-Base/Lid-0.8-ASSY-#	50 mm	eM-20, eM-21
2" SQ	<b>eVT1199-ASSY-2</b>	eV10-2/50.8-25-1.0-ASSY-2	2" Square	eM-21
2.5"	<b>eVT0406-ASSY-#</b>	eV10-2.5/63.5-25-Base/Lid-0.8-ASSY-#	63.5 mm	eM-20, eM-21
3"	<b>eVT0242-ASSY-1</b>	eV10-3/76-25-Base/Lid-1.3-ASSY-1	76 mm	eM-21
3"	<b>eVT0294-ASSY-1</b>	eV10-3/76-25-Base/Lid-0.8-ASSY-1	76 mm	eM-21
4"	<b>eVT0293-ASSY-1</b>	eV12-4/100-25-Base/Lid-0.7-ASSY-1	100 mm	eM-21
4"	<b>eVT0405-ASSY-1</b>	eV12-4/103-25-Base/Lid-1.3-ASSY-1	103 mm	eM-21
6"	<b>eVT0736-ASSY-1</b>	eV15-6/150-13-Base/Lid-1.5-ASSY-1	150 mm	eM-21

## Material code options: (-x in P/N)

Material	Code	SR
Clear PS	eM-21-CLR	n/a
Proprietary conductive PS	eM-20-BLK	10e4-10e11

[RETURN TO TABLE OF CONTENTS](#)

# WAFER SHIPPING BOXES



- Designed to hold multiple wafers by the edge
- 3-piece design includes Top, Cassette, and Base
- Designed to interface with automated equipment
- Clean Room plastic shipping bags available

## Product info:

Wafer Size	ePAK Order Code	ePAK Description	Internal Diameter	Number of Wafers Held
1"	eWB0302-ASSY-#	eMS-1/25.4-25-R.1-ASSY-#	25.4 mm	25
2"	eWB0028-ASSY-#	eMS-2/50-25-ASSY-#	50 mm	25
** 2"	eWB0340-ASSY-#	eMS-2/50-25-R.2-ASSY-#	50 mm	25
2.5"	eWB0105-ASSY-#	eMS-2.5/61.75-25-ASSY-#	61.75 mm	25
3"	eWB0029-ASSY-#	eMS-3/76-25-ASSY-#	76 mm	25
** 3"	eWB0297-ASSY-#	eMS-3/76-25-R.3-ASSY-#	76 mm	25
4"	eWB0258-ASSY-#	eMS-4/100-10-ASSY-#	100 mm	10
4"	eWB0259-ASSY-#	eMS-4/100-25-ASSY-#	100 mm	25
6"	eWB0286-ASSY-#	eMS-6/150-10-ASSY-#	150 mm	10
6"	eWB0347-ASSY-#	eMS-6/150-10-R.1-ASSY-#	150 mm	10

\*\*notes: eWB0340 & eWB0297 are for thinned wafers (<0.4mm)

## Material code options:

Material	Code	SR
Conductive PP	eM-01-BLK	10e4-10e5
Natural PP	eM-08-NAT	n/a



[RETURN TO TABLE OF CONTENTS](#)



# ePRO™ \* WAFER SHIPPING BOXES

- Designed to hold 25 wafers by the edge
- Made from ultra-clean PP material
- 3 piece design includes Lid, Cassette, and Base
- Protective shipping OverPAKs available...[see products](#)

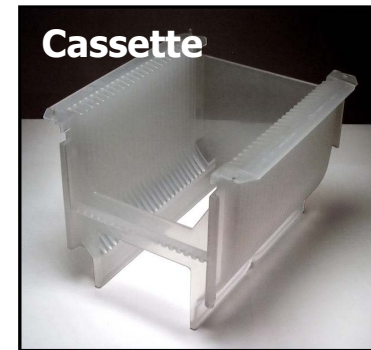
## Product info:

Wafer Size	ePAK Description	Internal Diameter
4"	ePRO-4/100-25-ASSY-#	100 mm
4"	ePRO II-4/100-25-ASSY-#	100 mm
4"	ePRO III-4/100-25-ASSY-#	100 mm
**4"	ePRO-THIN-4/100-25-ASSY-#	100 mm
5"	ePRO-5/125-25-ASSY-#	125 mm
5"	ePRO II-5/125-25-ASSY-#	125 mm
5"	ePRO III-5/125-25-ASSY-#	125 mm
6"	ePRO-6/150-25-ASSY-#	150 mm
6"	ePRO II-6/150-25-ASSY-#	150 mm
6"	ePRO III-6/150-25-ASSY-#	150 mm
155/160mm	ePRO-155/160-ASSY-#	155/160mm
8"	ePRO-8/200-25-ASSY-#	200 mm
8"	ePRO II-8/200-25-ASSY-#	200 mm
8"	ePRO III-8/200-25-ASSY-#	200 mm

\*\*notes: ePRO-THIN are for thinned wafers (<0.3mm)

## Material code options:

Material	Code	SR
Natural PP	eM-08-NAT	n/a
PC	eM-12, eM-175	n/a



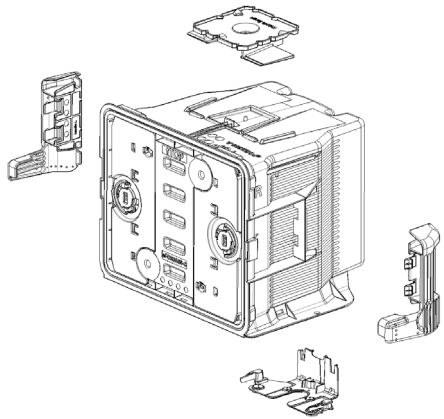
Please contact ePAK or your local agent to discuss the many ePRO™ options available to fit your requirements.

(PATENTS: US 7967146, US D639154, Taiwan M356220, Singapore 150443)

[RETURN TO TABLE OF CONTENTS](#)

# eFOSB300-A

(Front Opening Shipping Box – 300mm wafers)



- SEMI/FIMS compliant
- AMHS Compliant
- Automated operation minimizes potential contamination from human interaction
- Automation & Manual opening and closing
- Ultrapure, low outgassing materials protect wafers
- Robust wafer retention ensures reduced particle generation
- Cleanable without requiring disassembly of door

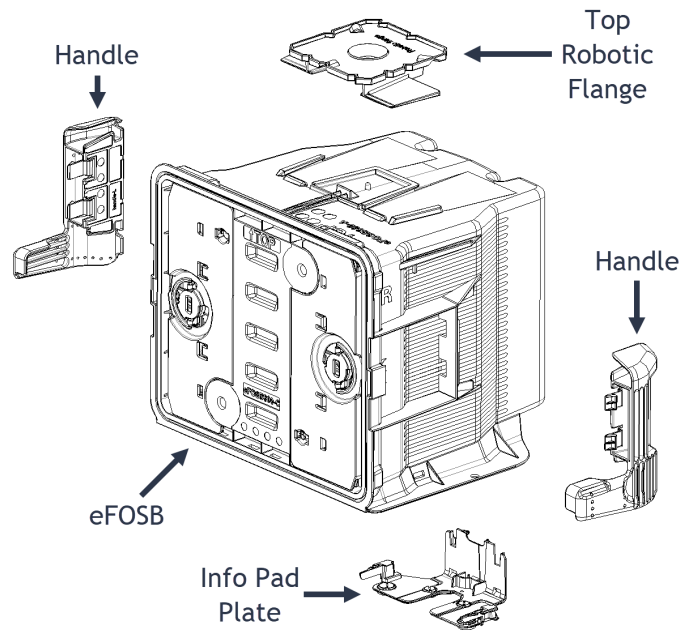


[RETURN TO TABLE OF CONTENTS](#)



# eFOSB300-A

**(Front Opening Shipping Box – 300mm wafers)**



Component
eFOSB
Handle (optional)
Robotic flange (optional)
Info tag plate (optional)
Info pads AB (optional)
Info pads CD (optional)

Option Combinations	Ordering Information		Component information				
	Order code	Description	Standard ASSY (eFOSB)	Manual Handle (H)	Top Robotic Flange (F)	Info-Pad Plate (I)	Empty weight
eFOSB, Handle, Robotic Flange, Info Tag Plate	<b>eWB0531-ASSY-3-HFI-X</b>	<b>eFOSB-A-ASSY-3-HFI-X</b>	eWB0531-ASSY-3	eWB0526-HL/HR-X	eWB0522-X	eWB0527-X	4.9 kg
eFOSB, Handle, Robotic Flange, Info Tag Plate, D-Ring	<b>eWB0531-ASSY-5-HFI-X</b>	<b>eFOSB-A-ASSY-5-HFI-X</b>	eWB0531-ASSY-5	eWB0526-HL/HR-X	eWB0522-X	eWB0527-X	4.9 kg

**There are very many option variations and combinations that can be configured to meet your specific requirements. Please contact ePAK or your local agent for more information.**

[RETURN TO TABLE OF CONTENTS](#)



# eFOUP300-A

(Front Opening Unified Pod – 300mm wafers)

- SEMI/FIMS compliant
- Automated operation minimizes potential contamination from human interaction
- Manual opening and closing
- Ultrapure, low outgassing, *ESD* materials protect wafers during processing
- Robust wafer retention ensures reduced particle generation
- Cleanable without requiring disassembly of door
- Diffuser Purge options

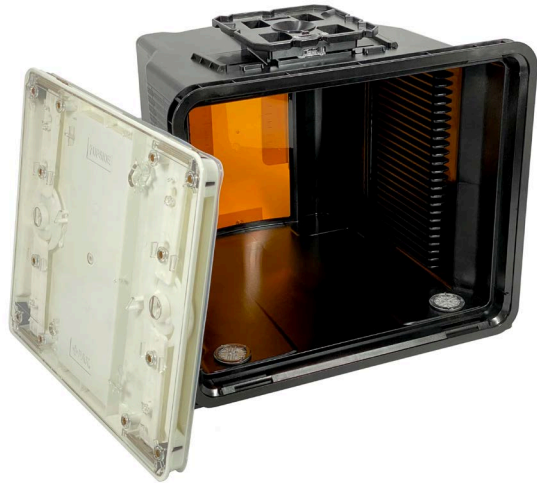


[RETURN TO TABLE OF CONTENTS](#)

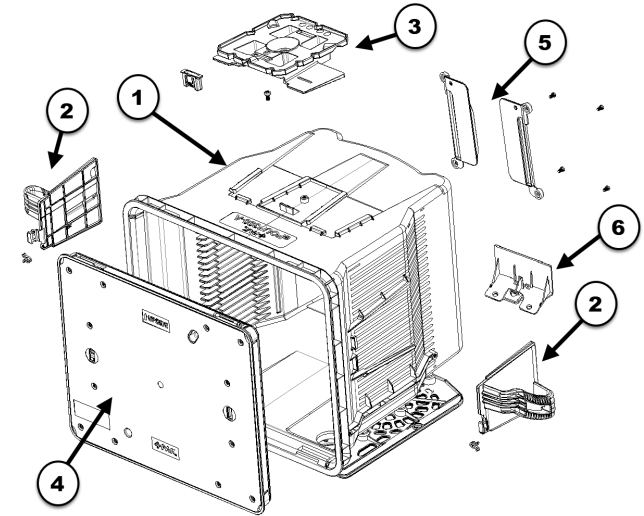


# eFOUP200-A and eFOUP300-A

(Front Opening Unified Pod – 200mm & 300mm wafers)



Item	Component
1	Shell
2	Handles (optional)
3	Robotic flange (optional)
4	Cover
5	Card Holders (optional)
6	Info /RFID plate (optional)



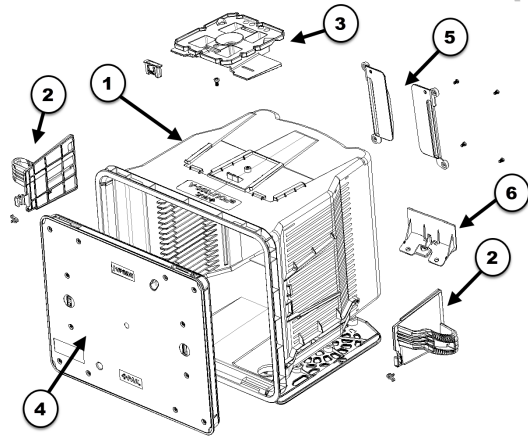
Option Combinations	Ordering Information		Component information						
	Order code	Description	Standard ASSY (eFOUP)	Standard Cover/Door	Handles	Top Robotic Flange	Card Holder	Info/RFI D Plate	SLOTS
eFOUP, White Handle, Flange, Card Holder, RFID	<b>eWB0685-ASSY-1</b>	<b>eFOUP300-A-ASSY-1-W</b>	eWB0685-ASSY-1 <b>(ORANGE TINT WINDOW)</b>	eWB0621-ASSY-1	eWB0635-HL/HR-eM-12-WHT	eWB0644-X	eWB0638-HL/HR-X	eWB0639/eWB0640	25
eFOUP, White Handle, Flange, Card Holder, RFID	<b>eWB0685-ASSY-12</b>	<b>eFOUP300-A-ASSY-12-W</b>	eWB0685-ASSY-6 <b>(CLEAR WINDOW)</b>	eWB0621-ASSY-1	eWB0635-HL/HR-eM-12-WHT	eWB0644-X	eWB0638-HL/HR-X	eWB0639/eWB0640	25
eFOUP, White Handle, Flange, Card Holder, RFID	<b>eWB0764-ASSY-1</b>	<b>eFOUP300-C-13-ASSY-1</b>	eWB0764B-ASSY-1	eWB0761-assy-1	eWB0635-HL/HR-eM-12-WHT	eWB0644-X	eWB0638-HL/HR-X	eWB0760 TH-X	13
eFOUP, White Handle, Flange, Card Holder, RFID	<b>eWB0766-ASSY-1</b>	<b>eFOUP300-C-25-ASSY-1</b>	eWB0766B-ASSY-1	eWB0621-assy-1	eWB0635-HL/HR-eM-12-WHT	eWB0644-X	eWB0638-HL/HR-X	eWB0760 TH-X	25
eFOUP, White Handle, Flange, Card Holder, RFID	<b>eWB0762-ASSY-1</b>	<b>eFOUP200-C-13-ASSY-1</b>	eWB0762B-ASSY-1	eWB0761-assy-1	eWB0635-HL/HR-eM-12-WHT	eWB0644-X	eWB0638-HL/HR-X	eWB0760 TH-X	13
eFOUP, White Handle, Flange, Card Holder, RFID	<b>eWB0763-ASSY-1</b>	<b>eFOUP200-C-25-ASSY-1</b>	eWB0763B-ASSY-1	eWB0621-assy-1	eWB0635-HL/HR-eM-12-WHT	eWB0644-X	eWB0638-HL/HR-X	eWB0760 TH-X	25

**There are very many option variations and combinations that can be configured to meet your specific needs and requirements. Please contact ePAK or your local agent for more information.**

[RETURN TO TABLE OF CONTENTS](#)

# eFOUP FF276 and FF380

(Front Opening Unified Pod for wafers on Flex Frames)



## For use with 200mm Wafers on 276mm Flat to Flat Flex Frames:

Option Combinations	Ordering Information		Component information					
	Order code	Description	Base ASSY	Cover/Door ASSY	Handles	Top Robotic Flange	Card Holder	Info/RFID Plate
eFOUP, White Handle, Flange, Card Holder, RFID	<b>eWB0765-ASSY-1-W</b>	<b>eFOUP-FF276-C-25-ASSY-1-W</b>	eWB0760B-ASSY-1	eWB0765C-ASSY-1	eWB0635-HL/HR-eM-12-WHT	eWB0644-X	eWB0638-HL/HR-X	eWB0760TH-X

## For use with 300mm Wafers on Flex Frames (coming soon Q3, 2024):

Option Combinations	Ordering Information		Component information						
	Order code	Description	Base ASSY	Cover/Door ASSY	Handles	Top Robotic Flange	RFID	SLOTS	Empty weight
Handle, Flange, RFID	<b>eWB0743-ASSY-1</b>	<b>eFOUP-FF380-13-ASSY-1-W</b>	eWB0743B-ASSY-1	eWB0743C-ASSY-1	eWB0743H-eM-157	eWB0743RF-eM-157	YES	13	4.1 kg
Handle, Flange, RFID	<b>eWB0743-ASSY-2-W</b>	<b>eFOUP-FF380-13-ASSY-2-W</b>	eWB0743B-ASSY-2	eWB0743C-ASSY-1	eWB0743H-eM-157	eWB0743RF-eM-157	YES	13	4.1 kg

There are very many option variations and combinations that can be configured to meet your specific needs and requirements. Please contact ePAK or your local agent for more information.

[RETURN TO TABLE OF CONTENTS](#)

# 6 inch & 8 inch ePOD™ PRO



Wafer Size	ePAK Order code	ePAK. Description	Lid Profile	Cassette Loading	RFID option	L x W x H	Top flange clearance
6"	eWB0759-ASSY-1	ePOD-PRO6-ASSY-1	Low Profile	Center	No	304.8 x 291.4 x 224.8	17mm
6"	eWB0759-ASSY-1-RF	ePOD-PRO6-ASSY-1-RF	Low Profile	Center	Yes	304.8 x 291.4 x 224.8	17mm
6"	eWB0772A-ASSY-1	ePOD-PRO6A-R.1-ASSY-1	Low Profile	Preposed	No	304.8 x 291.4 x 224.8	17mm
6"	eWB0772A-ASSY-1-RF	ePOD-PRO6A-R.1-ASSY-1-RF	Low Profile	Preposed	Yes	304.8 x 291.4 x 224.8	17mm
6"	eWB0807-ASSY-1	ePOD-PRO6-R.1-ASSY-1	High Profile	Center	No	305.5 x 292.5 x 291.1	27mm
6"	eWB0807-ASSY-1-RFR	ePOD-PRO6-R.1-ASSY-1-RFR	High Profile	Center	Yes	305.5 x 292.5 x 291.1	27mm
8"	eWB0725-ASSY-3	ePOD-PRO8-ASSY-3	High Profile	Center	No	304.8 x 291.4 x 279.3	17mm
8"	eWB0725-ASSY-3-RF	ePOD-PRO8-ASSY-3-RF	High Profile	Center	Yes	304.8 x 291.4 x 279.3	17mm
8"	eWB0808-ASSY-1	ePOD-PRO8-R.1-ASSY-1	High Profile	Center	No	305.5 x 292.5 x 291.1	27mm
8"	eWB0808-ASSY-1-RFR	ePOD-PRO8-R.1-ASSY-1-RFR	High Profile	Center	Yes	305.5 x 292.5 x 291.1	27mm
8"	eWB0843-ASSY-1	ePOD-PRO8-R.2-ASSY-1	High Profile	Center	No	305.5 x 292.5 x 291.1	27mm
8"	eWB0843-ASSY-1-RFR	ePOD-PRO8-R.2-ASSY-1-RFR	High Profile	Center	Yes	305.5 x 292.5 x 291.1	27mm
8" / 6"	eWB0772-ASSY-3	ePOD-PRO86-R.1-ASSY-3	High Profile	8" Centered / 6" preposed. See Note 1	No	304.8 x 291.4 x 279.3	17mm
8" / 6"	eWB0772-ASSY-3-RF	ePOD-PRO86-R.1-ASSY-3-RF	High Profile	8" Centered / 6" preposed. See Note 1	Yes	304.8 x 291.4 x 279.3	17mm
6" / 8"	eWB0772-ASSY-5	ePOD-PRO86-R.1-ASSY-5	High Profile	6" preposed / 8" Centered. See Note 2	No	304.8 x 291.4 x 279.3	17mm
6" / 8"	eWB0772-ASSY-5-RF	ePOD-PRO86-R.1-ASSY-5-RF	High Profile	6" preposed / 8" Centered. See Note 2	Yes	304.8 x 291.4 x 279.3	17mm

**Note 1:** Designed for 8" Cassette, but can potentially switch 6" Cassette later. Would need to exchange Cassette Retainer.

**Note 2:** Designed for 6" Cassette, but can potentially switch 8" Cassette later. Would need to exchange Cassette Retainer.

[RETURN TO TABLE OF CONTENTS](#)

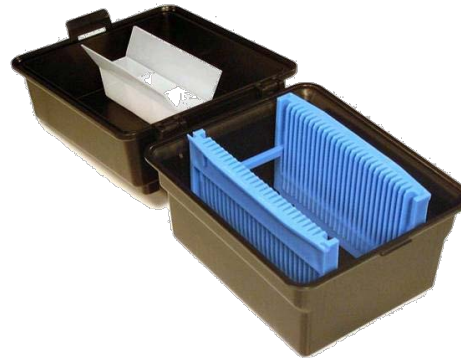


# 2", 3" & 4" PROCESS BOATS &

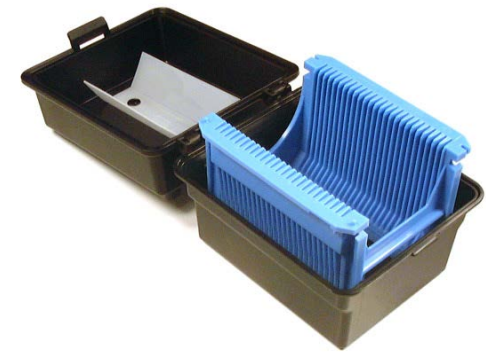
(For Process Boat ordering information, see product details on Page 23)



ePB-2/50-25-x-y inside  
ePBX-2-ASSY-#



ePB-3/76-25-x-y  
inside  
ePBX-3-ASSY-#



ePB-4/100-25-x-y  
inside  
ePBX-4-ASSY-#

## 2", 3" & 4" Storage Box Product info:

Wafer Size	ePAK Order code	ePAK Description	Notes
2"	eWB0095-ASSY-#	ePBX-2-ASSY-#	Requires shelf to hold cassette, cushion available
3"	eWB0123-ASSY-#	ePBX-3-ASSY-#	Optional shelf for R.2, R.3 and R.6 cassettes, cushion available
3"	eWB0260-ASSY-#	ePBX-3-R.1-ASSY-#	Low height lid, no cushion available
3"	eWB0433-ASSY-#	ePBX-3-R.2-ASSY-#	3" Small body box, cushion available
4"	eWB0124-ASSY-#	ePBX-4-ASSY-#	Cushion available
4" (2 cassettes)	eWB0097-ASSY-#	ePBX-5/125-2-ASSY-#	5" x 2 cassette box with special shelf holds 2 x 4" cassettes

## Material code info:

Material	Code	SR
Conductive Polypropylene (Black only)	eM-01-BLK	10e4-10e5
Polypropylene (Multiple Color Options →)	eM-08-(color code)	n/a

### Color code info

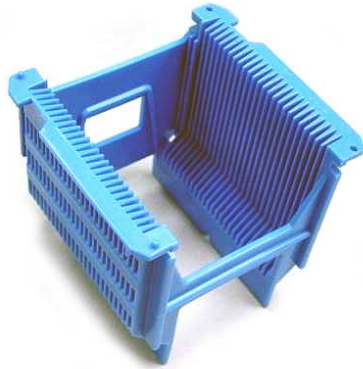
BLU = Blue  
GRN = Green  
RED = Red  
YLW = Yellow

[RETURN TO TABLE OF CONTENTS](#)



# 5" PROCESS BOATS & BOXES

(For ordering information, see product details on Pages 23-26)



**ePB-5/125-25-x-y**



**ePB-5/125-25-R.1-eM-61-BRW**



**ePB-5/125-25-R.2-x-y**



**ePB-5/125-25-R.4-eM-47-BLK**



**ePB-5/125-25-R.5-x-y**



**ePBX-5/125-ASSY-#**



**ePBX-5/125-R.1-ASSY-#**



**ePBX-5/125-2-ASSY-#**



[RETURN TO TABLE OF CONTENTS](#)



# 6" PROCESS BOATS & BOXES

(For ordering information, see product details on Pages 24-26)



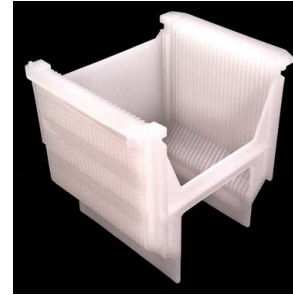
ePB-6/150-25-x-y



ePB-6/150-25-R.1-x-y



ePB-6/150-25-R.2-eM-47-BLK



ePB-6/150-25-R.4-eM-56



ePB-6/150-25-R.6-x-y



ePB-6/150-25-R.9-x-y



ePB-6/150-12-x-y



ePB-6/150-15-x-y



ePB-6/150-18-x-y



ePB-6/150-18-R.1-eM-47-BLK



ePBX-6/150-ASSY-#



ePBX-6/150-R.1-ASSY-#



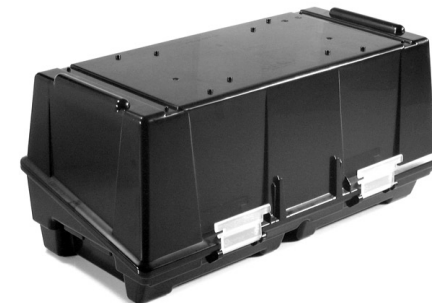
ePBX-6/150-R.3-ASSY-#



ePBX-6/150-R.5-ASSY-#



ePBX-6/150-R.10-ASSY-#



ePBX-6/150-2-ASSY-#



[RETURN TO TABLE OF CONTENTS](#)





# 8" PROCESS BOATS & BOXES

(For ordering information, see product details on Pages 25 - 27)



**ePB-8/200-25-eM-45-BLK**



**ePB-8/200-25-R.2-x-y**



**ePB-8/200-13-x-y**



**ePB-8/200-25-R.9-eM-47**



**ePBX-8/200-ASSY-#**



**ePBX-8/200-R.1-ASSY-#**



**ePBX-8/200-R.3-ASSY-#**

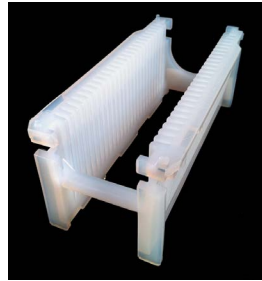


**ePBX-8/200-R.6-ASSY-#**

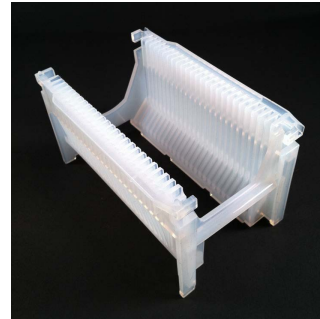


[RETURN TO TABLE OF CONTENTS](#)

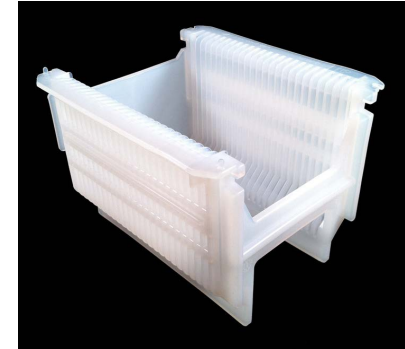
# PFA PROCESS CASSETTES



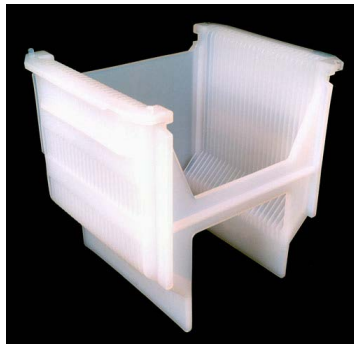
ePB-2/50-25-R.1-eM-39-NAT



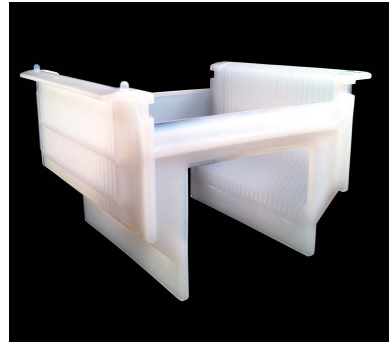
ePB-3/76-25-R.6-eM-39-NAT



ePB-4/100-25-R.9-eM-39-NAT



ePB-6/150-25-R.8-eM-39-NAT



ePB-6/150-25-R.10-eM-39-NAT



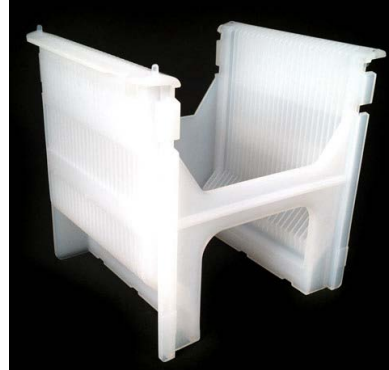
ePB-8/200-25-R.6-eM-39-NAT



ePB-8/200-25-R.10-eM-39-NAT



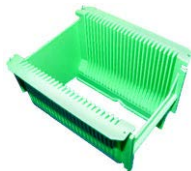
ePB-6/150-18-R.2-eM-39-NAT



ePB-6/150-25-R.11-eM-39-NAT



[RETURN TO TABLE OF CONTENTS](#)



# PROCESS BOATS

Wafer Size	ePAK Order Code	ePAK P/N Description	Materials available	Notes	Internal Diameter	Slots
2"	<b>eWB0031-x-y</b>	ePB-2/50-25-x-y	eM-01-BLK, eM-08-y, eM-56-NAT	-	50 mm	25
2"	<b>eWB0316-eM-39-NAT</b>	ePB-2/50-25-R.1-eM-39-NAT	eM-39-NAT	-	50 mm	25
2.5"	<b>eWB0405-eM-39-NAT</b>	ePB-2.5/63.5-25-eM-39-NAT	eM-39-NAT	-	63.5mm	25
3"	<b>eWB0032-x-y</b>	ePB-3/76-25-x-y	eM-01-BLK, eM-08-y, eM-56-NAT	-	76 mm	25
3"	<b>eWB0092-x-y</b>	ePB-3/76-25-R.2-x-y	eM-01-BLK, eM-08-y, eM-56-NAT	-	76 mm	25
3"	<b>eWB0096-x-y</b>	ePB-3/76-25-R.3-x-y	eM-01-BLK, eM-08-y, eM-56-NAT	-	76 mm	25
3"	<b>eWB0276-x-y</b>	ePB-3/76-25-R.4-x-y	eM-01-BLK, eM-08-y, eM-56-NAT	-	76 mm	25
3"	<b>eWB0280-eM-56-NAT</b>	ePB-3/76-25-R.5-eM-56	eM-56-NAT	(note: 3" boat in a 5" Outline)	76 mm	25
3"	<b>eWB0306-eM-39-NAT</b>	ePB-3/76-25-R.6-eM-39-NAT	eM-39-NAT	-	76 mm	25
4"	<b>eWB0049-x-y</b>	ePB-4/100-25-x-y	eM-01-BLK, eM-08-y, eM-56-NAT	-	100 mm	25
4"	<b>eWB0125-eM-56-NAT</b>	ePB-4/100-25-R.2-x-y	eM-56-NAT	(note: 4" boat in a 5" Outline)	100 mm	25
4"	<b>eWB0277-x-y</b>	ePB-4/100-25-R.6-x-y	eM-01-BLK, eM-08-y, eM-56-NAT	-	100 mm	25
4"	<b>eWB0308-x-y</b>	ePB-4/100-25-R.8-x-y	eM-01-BLK, eM-08-y, eM-56-NAT	-	100 mm	25
4"	<b>eWB0309-eM-39-NAT</b>	ePB-4/100-25-R.9-eM-39-NAT	eM-39-NAT	"-W" Window Option available	100 mm	25
4"	<b>eWB0604-eM-39-NAT</b>	ePB-4/100-20-eM-39-NAT	eM-39-NAT	-	100 mm	20
4"	<b>eWB0112-eM-47-BLK</b>	ePB-4/100-25-R.1-eM-47-BLK	eM-47-BLK	-	100 mm	25
5"	<b>eWB0088-x-y</b>	ePB-5/125-25-x-y	eM-01-BLK, eM-08-y, eM-56-NAT	Window is Standard	125 mm	25
5"	<b>eWB0098-eM-61-BRW</b>	ePB-5/125-25-R.1-eM-61-BRW	eM-61-BRW	"-N-" Notch Option available	125 mm	25
5"	<b>eWB0114-x-y</b>	ePB-5/125-25-R.2-x-y	eM-01-BLK, eM-08-y, eM-56-NAT	-	125 mm	25
5"	<b>eWB0229-eM-47-BLK</b>	ePB-5/125-25-R.4-eM-47-BLK	eM-47-BLK	"-N-" Notch Option available	125 mm	25
5"	<b>eWB0300-x-y</b>	ePB-5/125-25-R.5-x-y	eM-01-BLK, eM-08-y, eM-56-NAT	-	125 mm	25
5"	<b>eWB0536-eM-39</b>	ePB-5/125-25-R.6-eM-39	eM-39	5" boat in a 6" outline	125mm	25

### Material code info ("x" in P/N):

Material	Code	SR
Conductive Polypropylene (Black color only)	eM-01-BLK	10e4-10e5
Polypropylene (Multiple Color Options →)	eM-08-y	n/a
PFA (No color option)	eM-39-NAT	n/a
PP+PTFE+ CF (Dark Grey color only)	eM-45-BLK	10e4-10e10
PEEK + CF (No color option)	eM-47-BLK	≤10e9
Polyvinylidene Difluoride (PVDF, Natural color only)	eM-56-NAT	n/a

### Color code info (-y in P/N)

NAT = Natural (no color added)  
 BLU = Blue  
 GRN = Green  
 RED = Red  
 YLW = Yellow

[RETURN TO TABLE OF CONTENTS](#)



# PROCESS BOATS (continued)

Wafer Size	ePAK Order Code	ePAK P/N Description	Materials Available	Notes and/or Alternative ePAK P/N (-N) =with Notch Option (-W) =with Window Option (-H) =with Handle Option	Internal Diameter	Slots
6"	<b>eWB0051-x-y</b>	ePB-6/150-25-x-y	eM-01-BLK, eM-08-y, eM-56-NAT	ePB-6/150-25-N-x-y	150 mm	25
6"	<b>eWB0787-x-y</b>	ePB-6/150-25-R.42-x-y	eM-01-BLK, eM-08-y, eM-56-NAT	Notch option, Window option, RFID	150 mm	25
6"	<b>eWB0052-x-y</b>	ePB-6/150-25-R.1-x-y	eM-01-BLK, eM-08-y, eM-56-NAT	ePB-6/150-25-R.1-N-x-y	150 mm	25
6"	<b>eWB0101-N-eM-47-BLK</b>	ePB-6/150-25-R.2-N-eM-47-BLK	eM-47-BLK	Notch is Standard	150 mm	25
6"	<b>eWB0153-eM-56</b>	ePB-6/150-25-R.4-eM-56	eM-56-NAT	ePB-6/150-25-R.4-N-eM-56	150 mm	25
6"	<b>eWB0188-x-y</b>	ePB-6/150-25-R.6-x-y	eM-01-BLK, eM-08-y, eM-56-NAT	ePB-6/150-25-R.6-N-x-y	150 mm	25
6"	<b>eWB0304-eM-39-NAT</b>	ePB-6/150-25-R.8-eM-39-NAT	eM-39-NAT	ePB-6/150-25-R.8-W-eM-39-NAT	150 mm	25
6"	<b>eWB0307-x-y</b>	ePB-6/150-25-R.9-x-y	eM-01-BLK, eM-08-y, eM-56-NAT	ePB-6/150-25-R.9-W-x-y	150 mm	25
6"	<b>eWB0318-eM-39-NAT</b>	ePB-6/150-25-R.10-eM-39-NAT	eM-39-NAT	Low Profile	150 mm	25
6"	<b>eWB0327-eM-39-NAT</b>	ePB-6/150-25-R.11-eM-39-NAT	eM-39-NAT	n/a	150 mm	25
6"	<b>eWB0342-eM-39-NAT</b>	ePB-6/150-25-R.12-eM-39-NAT	eM-39-NAT	Low Profile, No H-bar	150mm	25
6"	<b>eWB0406-x-y</b>	ePB-6/150-13-x-y	eM-01-BLK, eM-08-y, eM-56-NAT	ePB-6/150-13-N-x-y	150mm	13
6"	<b>eWB0135-x-y</b>	ePB-6/150-12-x-y	eM-01-BLK, eM-08-y, eM-56-NAT	ePB-6/150-12-N-x-y	150 mm	12
6"	<b>eWB0359-x-y</b>	ePB-6/150-15-x-y	eM-01-BLK, eM-08-y	Short length cassette, standard slots	150mm	15
6"	<b>eWB0416-x</b>	ePB-6/150-18-x-y	eM-01-BLK, eM-08-y	ePB-6/150-18-N-x-y	150mm	18
6"	<b>eWB0417-eM-47-BLK</b>	ePB-6/150-18-R.1-eM-47-BLK	eM-47-BLK	ePB-6/150-18-R.1-N-eM-47-BLK	150mm	18
6"	<b>eWB0372-eM-39-NAT</b>	ePB-6/150-20-R.1-eM-39-NAT	eM-39-NAT	n/a	150mm	20
6"	<b>eWB0495-eM-47-BLK</b>	ePB-6/150-25-R.16-eM-47-BLK	eM-47-BLK	ePB-6/150-25-R.16-N-eM-47-BLK	150mm	25
6"	<b>eWB0537-eM-157-x</b>	ePB-6/150-25-R.21-eM-157-x	eM-157-x	Square top corner	150mm	25
6"	<b>eWB0554-eM-157-x</b>	ePB-6/150-25-R.23-eM-157-x	eM-157-x	Chamfered top corners	150mm	25
6"	<b>eWB0663-eM-39-NAT</b>	ePB-6/150-25-R.27-eM-39-NAT	eM-39-NAT	RFID Option	150mm	25
6"	<b>eWB0802-x</b>	ePB-6/150-25-R.46-N-X(PEEK)	eM-47, eM-170	Notch is Standard	150mm	25
6"	<b>eWB0819-x</b>	eWB0819-N-eM-170-BLK	eM-170	Notch, RFID	150mm	13
6"	<b>eWB0745-eM-01-BLK</b>	ePB-6/150-25-R.35-N-eM-01-BLK	eM-01-BLK	n/a	150mm	25
155 mm	<b>eWB0822-eM-39-NAT</b>	ePB-6/155-25-R.1-eM-39-NAT	eM-39-NAT	Notch is Standard, Window	155mm	25
160 mm	<b>eWB0823-eM-39-NAT</b>	ePB-6/160-25-R.1-eM-39-NAT	eM-39-NAT	Notch is Standard, Window	160mm	25
159 mm	<b>eWB0207-eM-47-BLK</b>	ePB-6/159-25-eM-47-BLK	eM-47-BLK	ePB-6/159-25-N-eM-47-BLK	159 mm	25
159 mm	<b>eWB0208-eM-39-NAT</b>	ePB-6/159-25-R.1-eM-39-NAT	eM-39-NAT	ePB-6/159-25-R.1-N-eM-39-NAT	159 mm	25
159 mm	<b>eWB0575-eM-22-BLK</b>	ePB-6/159-12-R.6-eM-22-BLK	eM-22-BLK	ePB-6/159-12-R.6-N-eM-22-BLK	159 mm	12

**Material code info ("x" in P/N):**

Material	Code	SR	Material	Code	SR
Conductive Polypropylene (Black color only)	eM-01-BLK	10e4-10e5	PEEK + CF (No color option)	eM-47-BLK	≤10e9
Polypropylene ("y" Multiple Color Options)	eM-08-y	n/a	PVDF (Natural color only)	eM-56-NAT	n/a
PFA (No color option)	eM-39-NAT	n/a	Polycarbonate +CF	eM-157-x	10e4-10e7
PP+PTFE+ CF (Dark Grey color only)	eM-45-BLK	10e4-10e10	PEEK	eM-170-BLK	≤10e9

[RETURN TO TABLE OF CONTENTS](#)

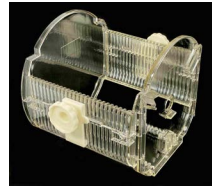




# PROCESS BOATS (continued)

## 8" Process Boats:

Wafer Size	ePAK Order Code	ePAK P/N Description	Materials Available	Notes and/or Alternative ePAK P/N (-N) =with Notch Option (-W) =with Window Option (-H) =with Handle Option	Internal Diameter	Slots
8"	<b>eWB0045-eM-45-BLK</b>	ePB-8/200-25-eM-45-BLK	eM-45-BLK	n/a	200 mm	25
8"	<b>eWB0090-x-y</b>	ePB-8/200-25-R.2-x-y	eM-01-BLK, eM-08-y, eM-56-NAT	n/a	200 mm	25
8"	<b>eWB0182-x-y</b>	ePB-8/200-13-x	eM-01-BLK, eM-08-y, eM-56-NAT	n/a	200 mm	13
8"	<b>eWB0220-eM-39-NAT</b>	ePB-8/200-25-R.6-eM-39-NAT	eM-39-NAT	n/a	200 mm	25
8"	<b>eWB0382-eM-47-BLK</b>	ePB-8/200-25-R.9-eM-47-BLK	eM-47-BLK	ePB-8/200-25-R.9-H-eM-47-BLK	200 mm	25
8"	<b>eWB0385-eM-39-NAT</b>	ePB-8/200-25-R.10-eM-39-NAT	eM-39-NAT	Low Profile	200 mm	25
8"	<b>eWB0456-eM-157-x</b>	ePB-8/200-25-R.12-eM-157-x	eM-157-x	RFID option	200mm	25
8"	<b>eWB0533-eM-47-BLK</b>	ePB-8/200-25-R.13-eM-47	eM-47-BLK	eWB0382 but without H-Bar flanges	200mm	25
8"	<b>eWB0559-eM-170-BLK</b>	ePB-8/200-25-R.14-eM-170	eM-170-BLK	ePB-8/200-25-R.14-H-eM-170-BLK	200mm	25
8"	<b>eWB0548-eM-157-x</b>	ePB-8/203-13-eM-157-x	eM-157-x	RFID option	203mm	13
8"	<b>eWB0722/eWB0726/eWB0727</b>	ePB-8/200-25-R.21/R.23/R.24-X	eM-47, eM-170	RFID option	200mm	25
8"	<b>eWB0810-eM-170-BLK</b>	ePB-8/200-25-R.26-eM-170	eM-170-BLK	Handle, RFID	200mm	25
8"	<b>eWB0821-eM-170-BLK</b>	ePB-8/200-13-R.12-eM-170	eM-170-BLK	Standard Handle & Notch, RFID	200mm	13



## 12" Process Boats:

12"	<b>eWB0519-ASSY-X</b>	ePB-12/300-25-ASSY-X	eM-175-CLR/eM-123-NAT	RFID option	300mm	25
-----	-----------------------	----------------------	-----------------------	-------------	-------	----

### Material code info: ("x" in P/N):

Material	Code	SR	Material	Code	SR
Conductive Polypropylene (Black color only)	eM-01-BLK	10e4-10e5	PEEK + CF (No color option)	eM-47-BLK	≤10e9
Polypropylene ("-y" Multiple Color Options)	eM-08-y	n/a	PVDF (Natural color only)	eM-56-NAT	n/a
PFA (No color option)	eM-39-NAT	n/a	Polycarbonate	eM-175-CLR	n/a
PP+PTFE+ CF (Dark Grey color only)	eM-45-BLK	10e4-10e10	Polycarbonate +CF	eM-157-x	10e4-10e7

[RETURN TO TABLE OF CONTENTS](#)



# PROCESS BOAT STORAGE BOXES



- Storage Boxes are Stackable
  - Available in many material options:
    - eM-01-BLK is equivalent to Entegris® Stat-Pro® 100 (PP + CP) material\*
    - eM-08-NAT is natural PP material with many color options
    - eM-46-BLK is equivalent to Entegris® Stat-Pro® 175 (PP + CF) material\*
- \*(PP = Polypropylene, CF=Carbon Fiber, CP=Carbon Powder, PTFE= Polytetrafluoroethylene)

## Product info:

Wafer Size	ePAK Order Code	ePAK P/N Description	Materials Available	Compatible with ePAK Process Cassettes
5"	<b>eWB0078-ASSY-#</b>	ePBX-5/125-ASSY-#	eM-01-BLK, eM-08-x-y	eWB0088-x-y, eWB0114-x-y
5"	<b>eWB0127-ASSY-#</b>	ePBX-5/125-R.1-ASSY-#	eM-01-BLK, eM-08-x-y	eWB0088-x-y, eWB0114-x-y
5"	<b>eWB0097-ASSY-#</b>	ePBX-5/125-2-ASSY-#	eM-01-BLK, eM-08-x-y	eWB0088-x-y, eWB0114-x-y eWB00300-x-y (BOX HOLDS 2 BOATS)
6"	<b>eWB0070-ASSY-#</b>	ePBX-6/150-ASSY-#	eM-01-BLK, eM-08-x-y, eM-46-x-y	eWB0051-x-y, eWB0052-x-y, eWB0135-x-y
6"	<b>eWB0073-ASSY-#</b>	ePBX-6/150-R.1-ASSY-#	eM-01-BLK, eM-08-x-y, eM-46-x-y	eWB0051-x-y, eWB0052-x-y, eWB0135-x-y
6"	<b>eWB0111-ASSY-#</b>	ePBX-6/150-2-ASSY-#	eM-01-BLK, eM-08-x-y, eM-46-x-y	eWB0051-x-y, eWB0052-x-y, eWB0135-x-y (BOX HOLDS 2 BOATS)
6"	<b>eWB0099-ASSY-#</b>	ePBX-6/150-R.3-ASSY-#	eM-01-BLK, eM-08-x-y, eM-46-x-y	eWB0051-x-y, eWB0052-x-y, eWB0135-x-y
6"	<b>eWB0159-ASSY-#</b>	ePBX-6/150-R.5-ASSY-#	eM-01-BLK, eM-08-x-y	eWB0051-x-y, eWB0052-x-y, eWB0135-x-y
6"	<b>eWB0336-ASSY-#</b>	ePBX-6/150-R.10-ASSY-#	eM-01-BLK, eM-08-x-y, eM-46-x-y	eWB0051-x-y, eWB0052-x-y, eWB0135-x-y
6"	<b>eWB0358-ASSY-#</b>	ePBX-6/150-R.11-ASSY-#	eM-01-BLK, eM-08-x-y	eWB0359-x-y
6"	<b>eWB0480-ASSY-#</b>	ePBX-6/150-2-R.4-ASSY-#	eM-46-x-y, eM-157-BLK	(BOX HOLDS 2 BOATS)
155/160mm	<b>eWB0824-ASSY-#</b>	ePBX-155/160-ASSY-#	eM-01-BLK, eM-08-x-y	155/160mm profile
159 mm	<b>eWB0213-ASSY-#</b>	ePBX-6/159-ASSY-#	eM-01-BLK, eM-08-x-y, eM-46-x-y	eWB0207-eM-47-BLK, eWB0208-eM-39-NAT

*\*\*Please use Storage Box ePBX-8/200-R.1-eM-46 for Process Cassette PN: eWB0182-x-y (ePB-8/200-13-x) Please confirm with your sales person.*

## Material code info (-x in PN):

Material	Code	SR
Conductive Polypropylene (Black only)	eM-01-BLK	10e4-10e5
Polypropylene (Multiple Color Options →)	eM-08-NAT	n/a
PP+CF (Black only)	eM-46-BLK	10e4-10e10
PC+CF	eM-157-BLK	10e4-10e7

## Color code info (-y in P/N)

NAT = Natural  
 BLU = Blue  
 GRN = Green  
 RED = Red  
 YLW = Yellow

[RETURN TO TABLE OF CONTENTS](#)



# PROCESS BOAT STORAGE BOXES

**(CONTINUED.)**

- Storage Boxes are Stackable
  - Available in many material options:
    - eM-01-BLK is equivalent to Entegris® Stat-Pro® 100 (PP + CP) material\*
    - eM-08-NAT is natural PP material with many color options
    - eM-46-BLK is equivalent to Entegris® Stat-Pro® 175 (PP + CF) material\*
- \*(PP = Polypropylene, CF=Carbon Fiber, CP=Carbon Powder, PTFE= Polytetrafluoroethylene)



**Product info:**

Wafer Size	ePAK Order Code	ePAK P/N Description	Materials Available	Compatible with ePAK Process Cassettes
8"	<b>eWB0094-ASSY-#</b>	ePBX-8/200-ASSY-#	eM-01-BLK, eM-08-X, eM-46-X	eWB0045-x-y, eWB0090-x-y
8"	<b>eWB0100-ASSY-#</b>	ePBX-8/200-R.1-ASSY-# **	eM-01-BLK, eM-08-X, eM-46-X	eWB0045-x-y, eWB0090-x-y, eWB0182-x-y** Option eWB0534SH (shelf) to load 6" PB (eWB0051, eWB0052, eWB0135 & eWB0537)
8"	<b>eWB0221-ASSY-#</b>	ePBX-8/200-R.3-ASSY-#	eM-01-BLK, eM-08-X, eM-46-X	eWB0045-x-y, eWB0090-x-y,
8"	<b>eWB0338-ASSY-#</b>	ePBX-8/200-R.6-ASSY-#	eM-01-BLK, eM-08-X, eM-46-X	eWB0045-x-y, eWB0090-x-y,
8"	<b>eWB0367-ASSY-#</b>	ePBX-8/200-R.7-ASSY-#	eM-46-X, eM-157-X	eWB0045-x-y, eWB0090-x-y, Option eWB0534SH (shelf) to load 6" PB (eWB0051, eWB0052, eWB0135 & eWB0537)
8"	<b>eWB0451-ASSY-#</b>	ePBX-8/200-R.10-ASSY-#	eM-46-X, eM-157-X	Option eWB0534SH (shelf) to load 6" PB (eWB0051, eWB0052, eWB0135 & eWB0537)
8"	<b>eWB0755-ASSY-#</b>	ePBX-8/200-R.16-ASSY-#	eM-157, eM-186, eM-61	For Standard 8inch Process Boat

\*\*\* eWB0100 have Cushion(eWB0100CU/eWB0804CU) option

**Material code info:**

Material	Code	SR
Conductive Polypropylene (Black only)	eM-01-BLK	10e4-10e5
Polypropylene (Multiple Color Options →)	eM-08-NAT	n/a
PP+CF (Black only)	eM-46-BLK	10e4-10e10
PC+CF	eM-157-BLK	10e4-10e7

**Color code info**

NAT = Natural  
BLU = Blue  
GRN = Green  
RED = Red  
YLW = Yellow

[RETURN TO TABLE OF CONTENTS](#)

# ENVELOPES FOR STORAGE BOXES

- Envelopes are manufactured using clear PVC
- Snaps are manufactured using white Nylon (eM-64)



6"



8"

## Envelopes info:

ePAK Order code	Description	Anti-Static	Fits Boxes:
eOP0167-ASSY-1	2"/3"/4" Envelope-ASSY-1	YES	eWB0095, eWB0123, eWB0124, eWB0260/Competitor
eOP0167-ASSY-2	2"/3"/4" Envelope-ASSY-2	NO	eWB0095, eWB0123, eWB0124, eWB0260/Competitor
eOP0168-ASSY-1	5" Envelope-ASSY-1	YES	eWB0078, eWB0127/Competitor
eOP0168-ASSY-2	5" Envelope-ASSY-2	NO	eWB0078, eWB0127/Competitor
eOP0169-ASSY-1	6" Envelope-ASSY-1	YES	eWB0073, eWB0099, eWB0159, eWB0185/Competitor
eOP0169-ASSY-2	6" Envelope-ASSY-2	NO	eWB0073, eWB0099, eWB0159, eWB0185/Competitor
eOP0197-ASSY-1	6" Envelope R.1-ASSY-1	YES	eWB0073, eWB0099, eWB0159, eWB0185/Competitor
eOP0197-ASSY-2	6" Envelope R.1-ASSY-2	NO	eWB0073, eWB0099, eWB0159, eWB0185/Competitor
eOP0256-ASSY-1	6" Envelope R.2-ASSY-1	YES	eWB0073, eWB0099, eWB0159, eWB0185/Competitor
eOP0256-ASSY-2	6" Envelope R.2-ASSY-2	NO	eWB0073, eWB0099, eWB0159, eWB0185/Competitor
eOP0185-ASSY-1	8" Envelope-ASSY-1	NO	eWB0094, eWB0221/Competitor

## Material code options:

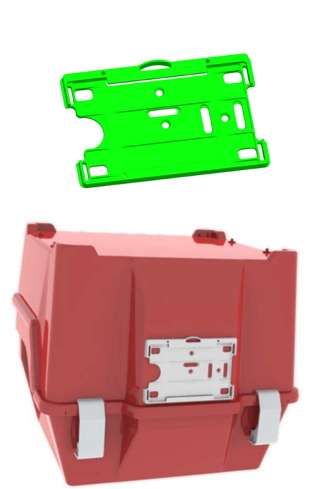
Material	Code	SR
White Nylon (Snaps)	eM-64	n/a
Clear PVC	eM-68	n/a
Anti-Static Clear PVC	eM-66	<10e11

[RETURN TO TABLE OF CONTENTS](#)





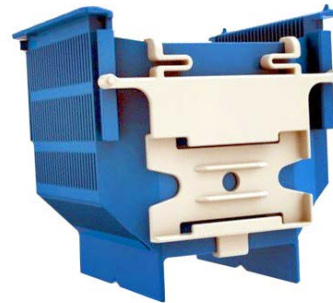
# BADGE HOLDERS & CLIPS



**BADGE HOLDER**  
Welded to Storage box



**CARD HOLDER**  
Attached to  
mWB0070



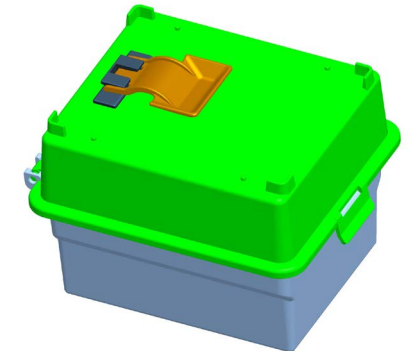
**eCH6-A**  
Attached to Process Boat



**ePB-4/100-Holder-x**  
& **eV8-78x25-Carrier-x**  
Attached to 4" Process Boat



**CARD HOLDER-R.1**  
Welded to  
Process Boat



**mOP0162 Assembly**  
(Attached to Box Lid)



**mOP0370**  
(Attached to Box Lid)

Order Code	Product Description	Application
eOP0162(P)-eM-34-BLK or eM-08-y	Storage Box Clip (Pedestal)-eM-34	Storage Box
eOP0162(S)-eM-34-BLK or eM-08-y	Storage Box Clip (Spring)-eM-34	Storage Box
eOP0163-eM-08-y	BADGE HOLDER	Multiple Application
eOP0184-eM-01-BLK	CARD HOLDER	mWB0070
eOP0392-eM-01-BLK/eM-46-BLK	CARD HOLDER-R.1	Multiple Application
eOP0206-(eM-01-BLK or eM-08-y)	eCH6-A	6" Process Cassettes (except PFA)
eOP0370-eM-73	Storage Box Clip	mWB0078
eOP0718-x	6" Paper Holder-x	mWB0073
eOP0813-x & eVT1898-x	ePB-4/100-Holder-x & eV8-78x25-Carrier-x	4" Process Cassette

<b>Color code</b> (-y in P/N)	NAT = Natural
	BLU = Blue
	GRN = Green
	RED = Red
	YLW = Yellow

[RETURN TO TABLE OF CONTENTS](#)

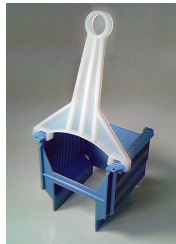
# HANDLES FOR PROCESS BOATS



**eOP0171**



**eOP0243**



**eOP0179**



**eOP0202-8-ASSY-2**



**eOP0202-8-ASSY-3**

For Boat sizes	ePAK Order code	Description	Handle Style	Compatible Process Boats
2"	<b>eOP0171-2-ASSY-1</b>	2" HANDLE ASSY-1	Squeeze with lock bar	eWB0031, eWB0316
2.5"	<b>eOP0171-2.5-ASSY-1</b>	2.5" HANDLE ASSY-1	Squeeze with lock bar	eWB0405
3"	<b>eOP0171-3-ASSY-1</b>	3" HANDLE ASSY-1	Squeeze with lock bar	eWB0092, eWB0096, eWB0306
4"	<b>eOP0171-4-ASSY-1</b>	4" HANDLE ASSY-1	Squeeze with lock bar	eWB0049, eWB0277, eWB0308, eWB0309
5"	<b>eOP0171-5-ASSY-1</b>	5" HANDLE ASSY-1	Squeeze with lock bar	eWB0088, eWB0114, eWB00229, eWB00300
5"	<b>eOP0179-5-ASSY-1</b>	5" HANDLE R.1 ASSY-1	Slingshot	eWB0088, eWB0114, eWB00229, eWB00300
6"	<b>eOP0171-6-ASSY-1</b>	6" HANDLE ASSY-1	Squeeze with lock bar	eWB0051, eWB0052, eWB0101, eWB0135, eWB0153, eWB0188, eWB0304, eWB0307, eWB0327,
6"	<b>eOP0179-6-ASSY-1</b>	6" HANDLE R.1 ASSY-1	Slingshot	eWB0051, eWB0052, eWB0101, eWB0135, eWB0153, eWB0188, eWB0304, eWB0307, eWB0327,
6"	<b>eOP0243-eM-39-NAT</b>	6" HANDLE-R.3-eM-39-NAT	Squeeze with support bar	eWB0051, eWB0052, eWB0101, eWB0135, eWB0153, eWB0188, eWB0304, eWB0307, eWB0318, eWB0327
159mm	<b>eOP0171-159-ASSY-1</b>	159 HANDLE ASSY-1	Squeeze with lock bar	eWB0207, eWB0208
8"	<b>eOP0202-8-ASSY-2</b>	8" HANDLE ASSY-2	Squeeze with lock bar	eWB0045, eWB0090, eWB0182, eWB0220, eWB0380, eWB0382,
8"	<b>eOP0202-8-ASSY-3</b>	8" HANDLE ASSY-3	Squeeze with lock bar	eWB0385

Material codes		
Material	Code	SR
PFA	eM-39-NAT	n/a

[RETURN TO TABLE OF CONTENTS](#)



# “COIN STYLE” SINGLE WAFER SHIPPERS\*

Wafer Size	ePAK Order Code	ePAK Description	Internal Diameter	Std Pack Quantity
1" (25mm)	eWB0091-ASSY-#	eCT1-25-ASSY-#	25.4 mm	100 /carton
1.5"(38mm)	eWB0325-ASSY-#	eCT1.5-38-ASSY-#	39.6 mm	100 /carton
2" (50mm)	eWB0021-ASSY-#	eCT2-50-ASSY-#	52 mm	100 /carton
2.5" (63mm)	eWB0328-ASSY-#	eCT2.5-63-ASSY-#	65.5 mm	100 /carton
3" (76mm)	eWB0022-ASSY-#	eCT3-76-ASSY-#	78.6 mm	100 /carton
3" (76mm) (3)	eWB0509-ASSY-#	eCT3-76-R.1-ASSY-#	76.7mm	100 /carton
3" (76mm)	eWB0572-ASSY-#	eCT3-76-R.3-ASSY-#	78.6 mm	100 /carton
3.25" (82mm)	eWB0329-ASSY-#	eCT3.25-82-ASSY-#	85 mm	100 /carton
3.54" (90mm)	eWB0330-ASSY-#	eCT3.54-90-ASSY-#	92 mm	100 /carton
4" (100mm)	eWB0024-ASSY-#	eCT4-100-ASSY-#	104 mm	100 /carton
4" (100mm) (1)	eWB0192-ASSY-#	eCT4-100-R.2-ASSY-#	104 mm	100 /carton
4" (100mm) (3)	eWB0404-ASSY-#	eCT4-100-R.3-ASSY-#	100.6 mm	100 /carton
4" (100mm)	eWB0573-ASSY-#	eCT4-100-R.4-ASSY-#	104 mm	100 /carton
5" (125mm)	eWB0060-ASSY-#	eCT5-125-ASSY-#	127 mm	100 /carton
6" (150mm)	eWB0025-ASSY-#	eCT6-150-ASSY-#	152 mm	100 /carton
6" (150mm) (1)	eWB0281-ASSY-#	eCT6-150-R.1-ASSY-#	152 mm	100 /carton
6" (150mm) (2)	eWB0320-ASSY-#	eCT6-150-R.2-ASSY-#	152 mm	100 /carton
6" (150mm)	eWB0574-ASSY-#	eCT6-150-R.4-ASSY-#	152 mm	100 /carton
6"(153mm/155mm)	eWB0796-ASSY-#	eCT-6-153/155-ASSY-#	153.8mm/156mm	100/carton



**Notes:**

- (1) Positive Locking Lid
- (2) Positive Locking Lid, Larger Label Area
- (3) Designed for Thin / Fragile wafers

**Material code options:**

Material	Code	SR
Natural PP	eM-08-NAT	n/a
LDPE (spring option only)	eM-11-NAT	n/a
Conductive PP	eM-01-BLK	10e4-10e5

(\*PATENT PENDING)

[RETURN TO TABLE OF CONTENTS](#)



## External packaging solution for our popular 2, 3, 4, and 6 inch Coin Style Single Wafer Shippers

### Product Information:

- For the 2" Coin Style Shippers: 5 pcs per layer/15 pcs per box
- For the 3" Coin Style Shippers: 3 pcs per layer/ 9 pcs per box
- For the 4" Coin Style Shippers: 2 pcs per layer/ 6 pcs per box
- For the 6" Coin Style Shippers: 3 pcs per layer/ 9 pcs per box

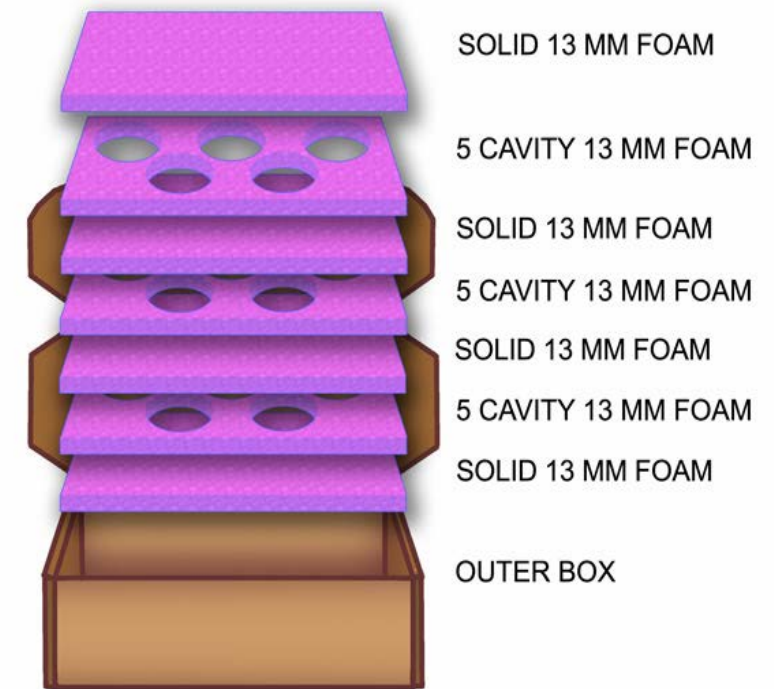
### Each MASTERPAK™ contains:

- 1 pcs - cardboard outer box
- 3 pcs - Antistatic PE foam with cavities for shippers
- 4 pcs - Antistatic PE foam cushion layer-Solid

### Ordering Information:

Wafer Size	ePAK Order Code	ePAK Description	Shippers per box	Foam Thickness
2"	eMP0001	MASTERPAK-2	15	13 mm
3"	eMP0002	MASTERPAK-3	9	13 mm
4"	eMP0003	MASTERPAK-4	6	13 mm
6"	eMP0010	MASTERPAK-6	9	13 mm

### SHOWING: MASTERPAK-2



Copyright © 2003 ePAK International, Inc.

[RETURN TO TABLE OF CONTENTS](#)



# SINGLE WAFER SHIPPERS

(INJECTION MOLDED)



## Clamshell Style Shippers - Hinged Single wafer shippers

Wafer Size	ePAK Order Code	ePAK Description	Internal Diameter	Internal Height	Std Pack Quantity
6" (150mm)	eWB0017-ASSY-#	eCT6-150-0.7-ASSY-#	150 mm	0.7 mm	15/carton
8" (200mm)	eWB0016-ASSY-#	eCT8-200-0.7-ASSY-#	200 mm	0.7 mm	10/carton

## Material code options:

Material	Code	SR
Clear PC	eM-12-TRA	n/a
Conductive PC	eM-22-BLK	10e2-10e6



[RETURN TO TABLE OF CONTENTS](#)

# SINGLE WAFER SHIPPERS

(INJECTION MOLDED)



**300mm**



**450mm**

## Coinstack Style Shippers — Single wafer shippers (Base with separate cover)

Wafer Size	ePAK Order Code	ePAK Description	Internal Diameter	Internal Height	Std Pack Quantity
12" (300mm)	eWB0053-ASSY-#	eCT12-300-0.8-ASSY-#	300 mm	0.8 mm	10/carton
18" (450mm)	eWB0210-ASSY-#	eCT-450-0.7-ASSY-#	450 mm	0.7 mm	10/carton

## Material code options:

Material	Code	SR
Natural PP	eM-08-NAT	n/a
Conductive PP	eM-01-BLK	10e4-10e5

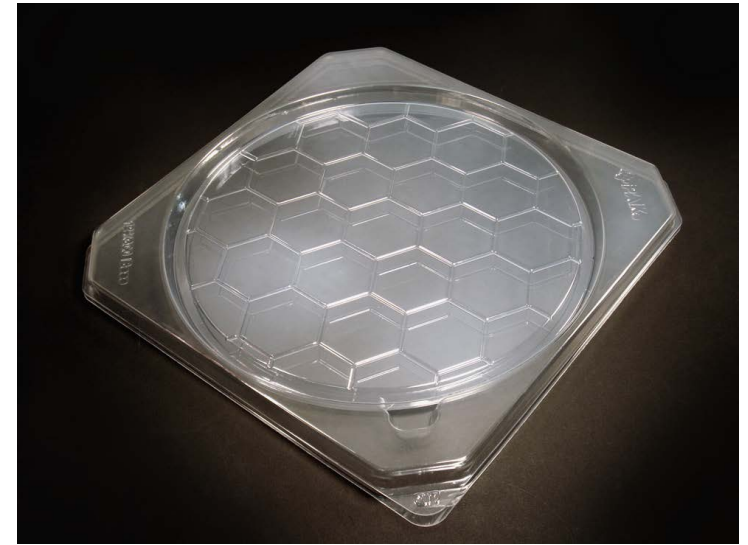


[RETURN TO TABLE OF CONTENTS](#)



# SINGLE WAFER SHIPPERS

(VACUUM-FORMED)



## Vacuum Formed Shippers – Single wafer shippers

Wafer Size	ePAK Order Code	ePAK Description	Internal Diameter	Std Pack Quantity
8" (200mm)	eVT1605-x	eV10-8/200-ASSY-#	200 mm	40/carton
12" (300mm)	eVT1415-x	eV9-12/300-X	300 mm	20/carton

## Material code options: (-x in P/N):

Material	Code	SR
Proprietary conductive PS	eM-20-BLK	10e4-10e11
Clear PS material	eM-21-CLR	N/A
Anti-Static coated PS	eM-23	10e8-10e12
Clear, A/S coated, APET	eM-25	10e7-10e11

[RETURN TO TABLE OF CONTENTS](#)

**Wafer Stiffener** – Support system for ultra-thin, brittle wafers

- Proprietary, ultra-pure material
- Adds rigidity to sensitive ultra-thin wafers

Wafer Size	ePAK Order Code	ePAK Description	Stiffener Diameter	Stiffener Thickness	Std Pack Quantity
1"	<b>eVT1128-x</b>	eWV1-25-0.25-x	25 mm	0.25 mm	100/pack
1"	<b>eVT1505-x</b>	eWV1-25-0.4-x	25 mm	0.40 mm	100/pack
2"	<b>eVT0171-x</b>	eWV2-50-0.25-x	50 mm	0.25 mm	100/pack
2"	<b>eVT0190-x</b>	eWV2-50-0.4-x	50 mm	0.40 mm	100/pack
3"	<b>eVT0191-x</b>	eWV3-76-0.25-x	76 mm	0.25 mm	100/pack
3"	<b>eVT0192-x</b>	eWV3-76-0.4-x	76 mm	0.40 mm	100/pack
3"	<b>eVT0193-x</b>	eWV3-76-0.5-x	76 mm	0.50 mm	100/pack
4"	<b>eVT0194-x</b>	eWV4-100-0.4-x	100 mm	0.40 mm	50/pack
4"	<b>eVT0195-x</b>	eWV4-100-0.6-x	100 mm	0.60 mm	50/pack
6"	<b>eVT0196-x</b>	eWV6-150-0.4-x	150 mm	0.40 mm	50/pack
6"	<b>eVT0197-x</b>	eWV6-150-0.6-x	150 mm	0.60 mm	50/pack
6"	<b>eVT0206-x</b>	eWV6-150-0.8-x	150 mm	0.80 mm	50/pack
8"	<b>eVT0198-x</b>	eWV8-200-0.6-x	200 mm	0.60 mm	50/pack
8"	<b>eVT0207-x</b>	eWV8-200-0.8-x	200 mm	0.80 mm	50/pack
12"	<b>eVT0199-x</b>	eWV12-300-0.8-x	300 mm	0.80 mm	50/pack



**Material code info** (–x in P/N):

Material	Code	SR
Proprietary conductive PS	eM-20-BLK	10e4-10e11

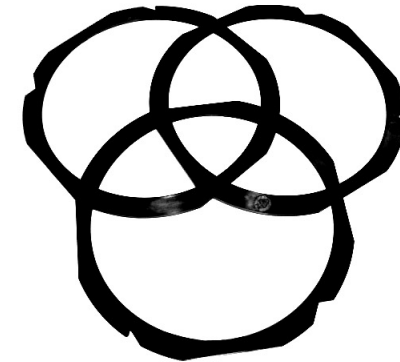
(\*PATENT PENDING)

[RETURN TO TABLE OF CONTENTS](#)





# PLASTIC FLEX FRAMES



- Designed for 100, 125, 150, 200 and 300 mm wafers
- Low-cost alternative to metal flex frames
- Designed to be used one time and then discarded
- Of special interest to those who ship wafers to customers on flex frames
  - No need to bear freight cost to return heavy metal frame
  - No need for cleaning metal frame before reuse
- Call for further details

## Plastic Flex Frames — For shipping wafers mounted on tape

ePAK Order Code	ePAK Description	Flat to Flat	Internal Diameter	Internal Height	Std Pack Quantity	Available	Fits into Flex Frame Shipper
eOP0863-eM-72	eFF5-125-1.8-eM-72	184mm	160mm	1.80mm	200/carton	now	
eOP0043-eM-59	eFF6-150-2.5-eM-59	217mm	194 mm	2.50 mm	200 /carton	NOW	eVT0415-x
eOP0067-eM-59	eFF6-150-2.5-R.1-eM-59	217mm	194 mm	2.50 mm	200 /carton	NOW	eVT0415-x
eOP0209-eM-89	eFF6-150-2.2-R.3-eM-89	215.9mm	185 mm	2.2 mm	200 /carton	NOW	eVT0415-x
eOP0304-eM-59	eFF6-150-2-R.6-eM-59	195mm	174 mm	2.0 mm	200 /carton	NOW	eVT1479-x
eOP0319-eM-59	eFF6-150-2.0-R.7-eM-59	212mm	194 mm	2.0 mm	200 /carton	NOW	eVT0302 & eVT1395
eOP0437-eM-59	eFF6-150-2.2-R.8-eM-59	216mm	185 mm	2.2 mm	200 /carton	NOW	eVT0415-x
eOP0091-eM-59	eFF-200-2.0-R.2-eM-59	276mm	250 mm	2.0 mm	200 /carton	NOW	eVT0320-x
eOP0064-eM-59	eFF8-200-2.4-eM-59	275mm	250 mm	2.40 mm	200 /carton	NOW	eVT0320-x
eOP0132-eM-59	eFF8-200-2.6-eM-59	276mm	250 mm	2.60 mm	200 /carton	NOW	eVT0320-x
eOP0494-eM-59	eFF8-200-2.6-R.3-eM-59	266mm	242 mm	2.60 mm	200 /carton	NOW	eVT0377-x
eOP0793-eM-59	eFF8-200-2.6-R.6-eM-59	276mm	250mm	2.60mm	200 /carton	NOW	eVT0320-x
eOP0137-eM-59	eFF12-300-3.5-eM-59	380mm	350 mm	3.5 mm	200 /carton	NOW	eVT0287-x

## Material code info:

Material	Code	SR
PPS Glass Reinforced	eM-59-BLK	n/a
SAN	eM-89	n/a

[RETURN TO TABLE OF CONTENTS](#)



# METAL FLEX FRAMES

- 410 SS / 420 SS
- 6 Inch and 8 Inch packed in carton quantities of 50
- 12 Inch packed in carton quantity of 25
- Other surface finishes available upon request
- Custom sizes and shapes available upon request



## Metal Flex Frames – For shipping wafers mounted on tape

ePAK Order Code	ePAK Description	Flat to Flat	Internal Diameter	Internal Height	Std Pack Quantity
<b>eOP0309</b>	eMF-DTF-2-6-1	212 mm	194 mm	1.22 mm	50 /carton
<b>eOP0310</b>	eMF-350-103	215.9 mm	192.5 mm	1.22 mm	50 /carton
<b>eOP0312</b>	eMF-350-104	266.7 mm	242.32 mm	1.22 mm	50 /carton
<b>eOP0311</b>	eMF-DTF-2-8-1	276 mm	250 mm	1.22 mm	50 /carton
<b>eOP0313</b>	eMF-DTF-2-12	380 mm	350 mm	1.52 mm	25 /carton
<b>eOP0574</b>	eMF-450	556 mm	506 mm	2.0 mm	25/carton



[RETURN TO TABLE OF CONTENTS](#)

# SINGLE FLEX FRAME SHIPPERS

- Designed for 100, 125, 150, 200 & 300mm wafers
- Available in uncoated, anti-static coated or conductive PS materials
- Call for further details.

## Plastic Flex Frame Shippers: For shipping flex frames with mounted wafers

ePAK Order Code	ePAK Description	Std Pack Quantity	Frame dims Flat to Flat	Shipper Style	Frame Style
eVT0302-x	eFS6-150-R.1-x	50 /carton	212 mm	C	DISCO DTF 2-6-1
eVT0303-x	eFS6-150-R.2-x	50 /carton	195 mm	C	DISCO DTF 2-6
eVT0415-x	eFS6-150-R.3-x	50 /carton	216 mm	C	K&S 350-103
eVT1384-x	eFS6-150-R.5-x	50 /carton	216 mm	C	K&S 350-103
eVT1395-ASSY-#	eFS6-150-R.6-ASSY-#	50 /carton	212 mm	T	DISCO DTF 2-6-1
eVT1479-x	eFS6-150-R.9-x	50 /carton	195 mm	C	DISCO DTF 2-6
eVT2253-x	eFS6-150-R.12-x	50 /carton	212 mm	C	DISCO DTF 2-6-1
eWB0781-X	eFS6-212X212-1-eM-22	20/carton	212mm	T	DISCO DTF-2-6-1
eVT0304-x	eFS8-200-R.1-x	25 /carton	Round Frame	C	Round Frame
eVT0320-x	eFS8-200-R.2-x	20 /carton	276 mm	C	DISCO DTF 2-8-1
eVT0377-x	eFS8-200-R.3-x	15 /carton	266 mm	C	K&S 350-104
eVT0380-x	eFS8-200-R.4-x	50 /carton	266 mm	C	K&S 350-104
eVT0972-x	eFS8-200-R.5-x	25 /carton	276 mm	C	DISCO DTF 2-8-1
eVT1650-ASSY-#	eFS8-200-R.8-ASSY-#	20 /carton	276 mm	T	DISCO DTF 2-8-1
eVT0287-x	eFS12-300-A-x	10 /carton	380 mm	C	SEMI G74 & G87
eVT0305-ASSY-#	eFS12-300-R.1-ASSY-#	10 /carton	380 mm	T	SEMI G74 & G87
eVT1607-X	eFS12-300-R.2-X	10 /carton	380 mm	C	SEMI G74 & G87
eVT1663-x	eFS12-300-R.3-x	10 /carton	380 mm	C	SEMI G74 & G87
eVT1723-x	eFS18-450-x	10 /carton	556 mm	T	



**Clamshell  
("C" Style)**



**Stacked Trays  
("T" Style)**

## Material code options: (-x in P/N):

Material	Code	SR
Proprietary conductive PS	eM-20-BLK	10e4-10e11
Clear PS material	eM-21-CLR	N/A
Anti-Static coated PS	eM-23	10e9-10e11

[RETURN TO TABLE  
OF CONTENTS](#)

# FLEX FRAME MULTI-SHIPPER

**Plastic Flex Frame Multi-Shippers** – For the vertical shipping of multiple Flex Frames with mounted wafers

Wafer Size	Frames Held	ePAK Order Code	ePAK Description	Flex Frame Height (Manuf.)
<b>6 Inch</b>	25 pcs	<b>mWB0214-ASSY-1</b> (Conductive PP)	eFS6-150-25-R.1-ASSY-1	212 mm (DISCO outline)
	25 pcs	<b>mWB0214-ASSY-3</b> (Natural PP)	eFS6-150-25-R.1-ASSY-3	212 mm (DISCO outline)
	25 pcs	<b>mWB0214-ASSY-2</b> (Conductive PP)	eFS6-150-25-R.1-ASSY-2	216 mm (K&S outline)
	25 pcs	<b>mWB0214-ASSY-4</b> (Natural PP)	eFS6-150-25-R.1-ASSY-4	216 mm (K&S outline)
<b>8 Inch</b>	25 pcs	<b>eWB0152-ASSY-1</b> (Natural PP)	eFS8-200-25-R.1-ASSY-1	276 mm (DISCO outline)
	25 pcs	<b>eWB0152-ASSY-3</b> (A/S impregnated Clear PP)	eFS8-200-25-R.1-ASSY-3	276 mm (DISCO outline)
	25 pcs	<b>eWB0152-ASSY-2</b> (Natural PP)	eFS8-200-25-R.1-ASSY-2	266 mm (K&S outline)
	25 pcs	<b>eWB0152-ASSY-4</b> (A/S impregnated Clear PP)	eFS8-200-25-R.1-ASSY-4	266 mm (K&S outline)
	25 pcs	<b>eWB0152-ASSY-5</b> (Conductive PP)	eFS8-200-25-R.1-ASSY-5	276 mm (DISCO outline)
	25 pcs	<b>eWB0152-ASSY-6</b> (Conductive PP)	eFS8-200-25-R.1-ASSY-6	266 mm (K&S outline)
	25 pcs	<b>eWB0152-ASSY-7</b> (Cond. PP w/ eM-50 Spring)	eFS8-200-25-R.1-ASSY-7	276 mm (DISCO outline)
	25 pcs	<b>eWB0152-ASSY-8</b> (Cond. PP w/ eM-50 Spring)	eFS8-200-25-R.1-ASSY-8	266 mm (K&S outline)
	25 pcs	<b>eWB0591-ASSY-1</b> (Conductive PP)	eFS8-200-25-R.3-ASSY-1	276 mm (DISCO outline) Metal
	25 pcs	<b>eWB0591-ASSY-2</b> (Conductive PP)	eFS8-200-25-R.3-ASSY-2	276 mm (DISCO outline) Plastic
	25 pcs	<b>eWB0591-ASSY-3</b> (Conductive PP)	eFS8-200-25-R.3-ASSY-3	266 mm (K&S outline)
	<b>12 Inch</b>	13 pcs	<b>eWB0195-ASSY-1</b> (Natural PP w/ 1.5 Spring)	eFS12-300-13-ASSY-1
13 pcs		<b>eWB0195-ASSY-2</b> (Natural PP w/ 3.5 Spring)	eFS12-300-13-ASSY-2	380 mm (SEMI G87) Plastic
13 pcs		<b>eWB0195-ASSY-3</b> (Conductive PP w/ 1.5 Spring)	eFS12-300-13-ASSY-3	380 mm (SEMI G74) Metal
13 pcs		<b>eWB0195-ASSY-4</b> (Conductive PP w/ 3.5 Spring)	eFS12-300-13-ASSY-4	380 mm (SEMI G87) Plastic



**150mm**



**200mm**



**300mm**

## Material code options:

Material	Code	SR
Conductive PP	eM-01-BLK	10e4-10e5
Natural PP	eM-50-NAT	N/A

Protective shipping OverPAKS™ available...[see products](#)

[RETURN TO TABLE OF CONTENTS](#)



# FLEX FRAME CANISTERS



Canister for 212mm & 216mm frames  
(150mm)



Canisters for 266mm & 276mm frames  
(200mm)



Canister for 380mm frames  
(300mm)

**Plastic Flex Frame Canisters** — For horizontal/coinstack shipping of multiple Flex Frames with mounted wafers

Wafer Size	Internal Height	ePAK Order Code	ePAK Description	Flex Frame Dim (Flat to Flat) (Manuf.)
6" (150mm)	40mm	<b>eWB0323-ASSY-1</b>	eFSC6-150-40-ASSY-1	212mm (DISCO outline)
6" (150mm)	40mm	<b>eWB0323-ASSY-2</b>	eFSC6-150-40-ASSY-2	216mm (K&S outline)
8" (200mm)	81mm	<b>eWB0394-ASSY-1</b>	eFSC8-200-81-266-R.1-ASSY-1	266mm (K&S outline)
8" (200mm)	81mm	<b>eWB0387-ASSY-1</b>	eFSC8-200-81-276-R.1-ASSY-1	276mm (DISCO outline)
8" (200mm)*	48 mm	<b>eWB0587-ASSY-1</b>	FSC8-200-48-ASSY-1	276mm (DISCO outline)
12" (300mm)	109mm	<b>eWB0448-ASSY-2</b>	eFSC12-300-109-R.2-ASSY-2	380mm
12" (300mm)	33mm	<b>eWB0857-ASSY-1</b>	eFSC12-300-33-ASSY-1	380mm (low capacity)

\* "eLX" Style with reduced movement features.

## Material code options:

Material	Code	SR
Conductive PP	eM-01-BLK	10e4-10e5

- A range of cushion disks and separators are available. Please see next page.
- Protective shipping OverPAKS™ available...[see products](#)

[RETURN TO TABLE OF CONTENTS](#)

# FLEX FRAME CANISTER ACCESSORIES



## Cushion Disks – ESD sensitive Cushioning material for use with Canisters and Jars

Wafer Size	FITS CANISTER PN:	ePAK Order Code	ePAK Description	Foam Dim (Flat to Flat)	Foam Thickness	Std Pack Quantity
6"	eWB0323 (ALL ASSY)	<b>eFD0052-eM-04-H-PNK</b>	eFD-225-6-eM-04-H-PNK	225mm	6 mm	50/pack
8"	eWB0394	<b>eFD0083-eM-04-H-PNK</b>	eFD8-265/265-3-eM-04-H-PNK	266mm	3 mm	100/pack
8"	eWB0394	<b>eFD0084-eM-04-H-PNK</b>	eFD8-265/265-6-eM-04-H-PNK	266mm	6 mm	50/pack
8"	eWB0387	<b>eFD0058-eM-04-H-PNK</b>	eFD8-275/275-3-eM-04-H-PNK	276mm	3 mm	100/pack
8"	eWB0387	<b>eFD0059-eM-04-H-PNK</b>	eFD8-275/275-6-eM-04-H-PNK	276mm	6 mm	50/pack
12"	eWB0448	<b>eFD0081-eM-04-H-PNK</b>	eFD12-378/378-R.1-3-eM-04-H-PNK	378mm	3 mm	50/pack
12"	eWB0448	<b>eFD0080-eM-04-H-PNK</b>	eFD12-378/378-R.1-6-eM-04-H-PNK	378mm	6 mm	50/pack

### Material code options:

Material	Code	SR
Closed-cell polyethylene	eM-04-H-PNK	10e5-10e11

[RETURN TO TABLE OF CONTENTS](#)





# FLEX FRAME CANISTER ACCESSORIES

**Separators:** For use between wafers on frames

Wafer Size	FITS CANISTER PN:	ePAK Order Code	ePAK Description	Interleaf Dim (Flat to Flat)	Separator Thickness	Std Pack Quantity
<b>Anti-static spun PO (Tyvek®)</b>						
6"	eWB0323	<b>eIL0096-eM-03-A-WHT</b>	eIL-225-0.16-eM-03-A-WHT	225 mm	0.16 mm	250/pack
8"	eWB0394	<b>eIL0151-eM-03-A-WHT</b>	eIL8-265/265-0.16-eM-03-A-WHT	265 mm	0.16 mm	250/pack
8"	eWB0387	<b>eIL0102-eM-03-A-WHT</b>	eIL8-275/275-0.16-eM-03-A-WHT	275 mm	0.16 mm	250/pack
12"	eWB0448	<b>eIL0097-eM-03-A-WHT</b>	eIL12-398-0.16-eM-03-A-WHT	378mm	0.16 mm	250/pack
<b>Separators- ESD PS (Smooth eM-20-BLK)</b>						
8"	eWB0394	<b>eIL0149-eM-20-BLK</b>	eIL8-265/265-0.13-eM-20-BLK	265 mm	0.13 mm	250/pack
8"	eWB0387	<b>eIL0146-eM-20-BLK</b>	eIL8-275/275-0.13-eM-20-BLK	276 mm	0.13 mm	250/pack
12"	eWB0448	<b>eIL0147-eM-20-BLK</b>	eIL12-378/378-0.16-eM-20-BLK	378mm	0.16 mm	250/pack
<b>Separators- ESD PS (Embossed eM-20-BLK)</b>						
6"	eWB0323	<b>eIL0091-eM-20-BLK</b>	eIL-225-0.07-eM-20-BLK	225 mm	0.07 mm	250/pack
8"	eWB0387	<b>eIL0157-eM-20-BLK</b>	eIL8-275/275-0.13-EMBOSED-eM-20-BLK	275 mm	0.13 mm	250/pack

**Material code info:**

Material	Code	SR
Anti-static spun PO (Tyvek®)	eM-03-A-WHT	10e6-10e11
Proprietary conductive PS	eM-20-BLK	10e4-10e11

**Moisture Barrier Bags:**

Wafer Size	FITS CANISTER PN:	ePAK Order Code	ePAK Description	Width (mm)	Length (mm)	Material Thickness	Std Pack Quantity
6"	eWB0323	<b>eOP0078-19-eM-41</b>	eBAG-330X380X0.08-eM-41	330	380	0.08 mm	500/carton
8"	eWB0394 & eWB0387	<b>eOP0690-eM-41</b>	eBAG-483X585X0.08-eM-41	483	585	0.08 mm	500/carton

**Material code info:**

Material	Code	SR
Metalized PET+PET+CPE	eM-41	10e6-10e11

[RETURN TO TABLE OF CONTENTS](#)





**Hoop Rings:** (X) is material code, (Y) is color code

ePAK Order Code	ePAK Description	Diameter	Ring Height	Locator Notch	Standard Color	Std Pack Quantity
eOP0062-x-y	eHR-122/134-6-IN-X-Y	ID=122 mm	6 mm	No	Grey	200 /carton
eOP0063-x-y	eHR-122/134-6-OUT-X-Y	OD=134 mm	6 mm	No	Blue	200 /carton
eOP0051-x-y	eHR-140/152-6-IN-X-Y	ID=140 mm	6 mm	No	Grey	200 /carton
eOP0050-x-y	eHR-140/152-6-OUT-X-Y	OD=152 mm	6 mm	No	Blue	200 /carton
eOP0790-x-y	eHR-140/152-6-IN-R.1-X-Y	ID=140 mm	6 mm	No	Grey	200 /carton
eOP0791-x-y	eHR-140/152-6-OUT-R.1-X-Y	OD=152 mm	6 mm	No	Blue	200 /carton
eOP0842-x-y	eHR-140/152-6-IN-R.2-X-Y	ID=140 mm	6 mm	No	Black	200 /carton
eOP0841-x-y	eHR-140/152-6-OUT-R.2-X-Y	OD=152 mm	6 mm	No	Black	200 /carton
<b>For 6 Inch/150mm:</b>						
eOP0049-x-y	eHR-170/186-6-IN-X-Y	ID=170 mm	6 mm	Yes	Grey	200 /carton
eOP0048-x-y	eHR-170/186-6-OUT-X-Y	OD=186 mm	6 mm	Yes	Blue	200 /carton
eOP0340-x-y	eHR-170/186-6-IN-R.2-X-Y	ID=170 mm	6 mm	Yes	Yellow	200 /carton
eOP0339-x-y	eHR-170/186-6-OUT-R.2-X-Y	OD=186 mm	6 mm	Yes	Red	200 /carton
eOP0066-x-y	eHR-195/210-6-IN-X-Y	ID=195 mm	6 mm	No	Black	200 /carton
eOP0065-x-y	eHR-195/210-6-OUT-X-Y	OD=210 mm	6 mm	No	Green	200 /carton
eOP0755-x-y	eHR-195/210-6-OUT-R.2-X-Y	OD=210 mm	6 mm	Yes	Green	200 /carton
eOP0236-x-y	eHR-195/210-6-IN-R.1-X-Y	ID=195 mm	6 mm	No	Green	200 /carton
eOP0235-x-y	eHR-195/210-6-OUT-R.1-X-Y	OD=210 mm	6 mm	No	Black	200 /carton
eOP1230-x-y	eHR-195/210-6-IN-R.3-X-Y(R)	ID=195 mm	6 mm	No	Green	200 /carton
eOP1229-x-y	eHR-195/210-6-OUT-R.3-X-Y(R)	OD=210 mm	6 mm	No	Black	200 /carton

**NOTE:** The word "UP" printed is ePAK Standard style. For printing the word "RADIUS" please add "-R" to end of the ePAK Order Code

**Material code info:** (-X in P/N):

Material	Code	SR
MPC	eM-16-Y	N/A

**Color code info:** (-Y in P/N)

Colors:	
	B = Blue G = Green GY = Grey Y = Yellow

[RETURN TO TABLE OF CONTENTS](#)





**Hoop Rings:** (X) is material code, (Y) is color code

ePAK Order Code	ePAK Description	Diameter	Ring Height	Locator Notch	Standard Color	Std Pack Quantity
<b>For 8 Inch/200mm:</b>						
eOP0183-x-y	eHR-225/241-6-IN-X-Y	ID=225 mm	6 mm	No	Yellow	200 /carton
eOP0182-x-y	eHR-225/241-6-OUT-X-Y	OD=241 mm	6 mm	No	Red	200 /carton
eOP0342-x-y	eHR-228/248-7-IN-X-Y	ID=227.7mm	7mm	No	Yellow	100/carton
eOP0341-x-y	eHR-228/248-7-OUT-X-Y	OD=248mm	7mm	No	Red	100/carton
eOP1247-x-y	eHR-240.5/257-6-IN-X-Y(R)	ID=240.5mm	6mm	No	Black	100/carton
eOP1246-x-y	eHR-240.5/257-6-OUT-X-Y(R)	OD=257mm	6mm	No	White	100/carton
<b>For 12 Inch/300mm:</b>						
eOP0327-x-y	eHR-330/347-6-IN-X-Y	ID=330 mm	6mm	No	Black	50 /carton
eOP0326-x-y	eHR-330/347-6-OUT-X-Y	OD=347 mm	6mm	No	Yellow	50 /carton

**NOTE:** The word "UP" printed is ePAK Standard style. For printing the word "RADIUS" please add "-R" to end of the ePAK Order Code

**Material code info:** (-X in P/N):

Material	Code	SR
MPC	eM-16-Y	N/A

**Color code info:** (-Y in P/N)

<b>Colors:</b>	B = Blue
	G = Green
	GY = Grey
	Y = Yellow



[RETURN TO TABLE OF CONTENTS](#)

# HOOP RING SHIPPERS

**Single Hoop Ring Shippers** – Designed to hold single Hoop Ring assembly with wafer and tape

ePAK Order Code	ePAK Description	ID/OD of ring set(s) held	Std Pack Quantity	Materials Options
eVT0289-x	eV11-HRS-195/210.170/186-x	195/210 & 170/186	50 /carton	eM-20-BLK, eM-21-CLR, eM-23
eVT0336-x	eV11-HRS-140/152-x	140mm/152mm and 115mm/126.75mm	100 /carton	eM-20-BLK, eM-21-CLR, eM-23
eVT0680-x	eV11-HRS-140/152-R.1-x	140mm/152mm and 115mm/126.75mm	100 /carton	eM-20-BLK, eM-21-CLR, eM-23
eVT1726-x	eV8-HRS-140/152-R.2-x	140mm/152mm	100 /carton	eM-20-BLK, eM-21-CLR, eM-23
eVT0244-x	eV10-HRS-170/186-x	170mm/186mm	50 /carton	eM-20-BLK, eM-21-CLR, eM-23
eWB0217-195/210-x	eHS-195/210-x	195mm/210mm	20 /carton	eM-12, eM-22
eVT0939-x	eV12-HRS-225/241-x	225mm/241mm	30 /carton	eM-20-BLK, eM-21-CLR, eM-23
eVT2206-x	eV12-HRS-228/248-x	228mm/248mm	30 /carton	eM-20-BLK, eM-21-CLR, eM-23
eVT1465-x	eV20-HRS-330/347-x	330mm/347mm	20 /carton	eM-20-BLK, eM-21-CLR, eM-23

Note: eVT0336 fits loosely around rings, eVT0680 fits snug to outer hoop rings

**Material code info:** (-x in P/N):

Material	Code	SR
Proprietary conductive PS	eM-20-BLK	10e4-10e11
Clear PS material	eM-21-CLR	N/A
Anti-Static coated Clear PS	eM-23-CLR	10e8-10e11
Clear PC	eM-12-TRA	n/a
Conductive PC	eM-22-BLK	10e2-10e6

**Hoop Ring Shippers** – Designed to hold multiple Hoop Ring assemblies with wafer and tape

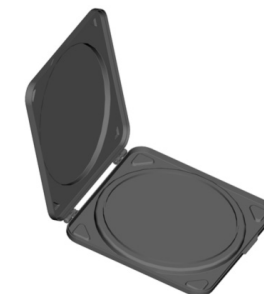
ePAK Order Code	ePAK Description	OD of ring set(s) held	Materials Options
eWB0256-x	eJR-210-65-X	210mm	eM-01-BLK, eM-08-NAT



eV11-HRS-195/210.170/186-x



eV10-HRS-170/186-x



eHS-195/210-x



eJR-210-65-x

[RETURN TO TABLE OF CONTENTS](#)

# GLASS SUBSTRATE SHIPPERS

## Round Glass:

Substrate Size	ePAK Order Code	ePAK Description	Max Substrates per Shipper
170x1.5	<b>eWB0162-x</b>	eGBX-170x1.5-X	1
160x1.65	<b>eWB0163-x</b>	eGBX-160X1.65-20-X	20
180x1.65	<b>eWB0165-x</b>	eGBX-180X1.65-20-X	20



## Material Code info for adapter plates ONLY:(-x in P/N):

Material	Code	SR
PS	eP-28	n/a
ABS	eM-73	n/a

## Rectangular Glass:

Substrate Size	ePAK Order Code	Cassette Description	Max Substrates per Cassette
180x230	<b>eWB0178-x</b>	ePB-180X230-25-X	25

Substrate Size	ePAK Order Code	Box Description	Compatible with Cassette:
180x230	<b>eWB0179-ASSY-#</b>	ePBX-180X230-ASSY-#	ePB-180X230-25-X

## Material Code info: (-x in P/N):

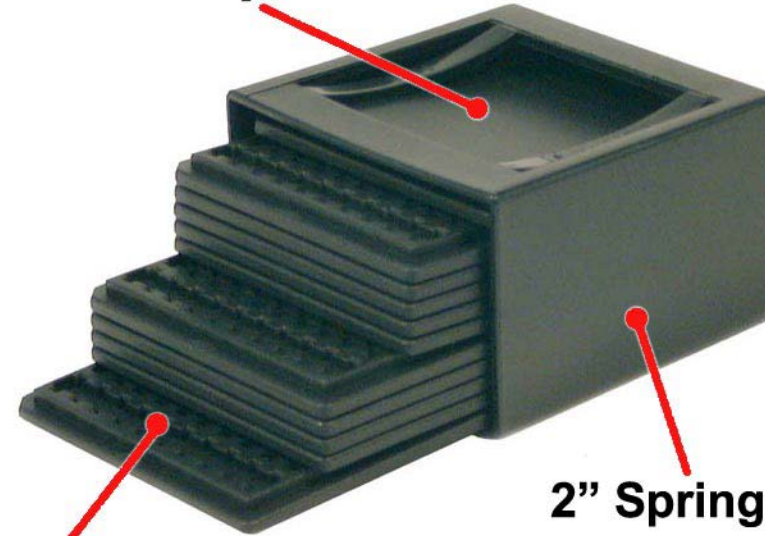
Material	Code	SR
Conductive PP	eM-01-BLK	10e4-10e5
Natural PP (Multi Shipper only)	eM-50-NAT	N/A
**Polyvinylidene Difluoride (PVDF)	eM-56-NAT	n/a

\*\* PVDF Material option is for Cassette only.



# CHIP TRAY SYSTEM

**2" Dice Tray Cover**



**2" Spring Box**

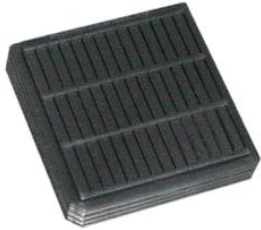
**2" Dice Tray**

- Flexible packing system
- Fast tooling cycle time
- Standardized outline and full set of accessories including caps, clips and cover tray
- Convenient carrier for sample die, finished IC or other small components
- Contact ePAK today to discuss your custom chip tray solution



[RETURN TO TABLE OF CONTENTS](#)

## Chip Tray Open Tooling: 2" X 2" TRAYS



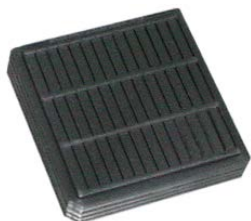
Tray size	Chip Size	Thick	Matrix	Order Code	Chip Tray Description	Material Options (-x)	Std Pack Quantity
2" x 2"	0.84X1.3	0.3	16X22	eDT0036-X	eD2-0.84X1.3X0.3-1622-X	eM-22-BLK	2000 /carton
2" x 2"	0.89X0.89	0.38	20X20	eDT0178-X	eD2 0.89X0.89X0.38 2020 X	eM-22-BLK	2000 /carton
2" x 2"	0.89X0.89	0.38	20X20	eDT0199-X	eD2 0.89X0.89X0.38 2020 R.1 X	eM-22-BLK	2000 /carton
2" x 2"	0.9X1.05	0.35	16X16	eDT0209-X	eD2 0.90X1.05X0.35 1616 X	eM-22-BLK	2000 /carton
2" x 2"	0.98X1.15	0.35	16X16	eDT0214-X	eD2 0.98X1.15X0.35 1616 X	eM-22-BLK	2000 /carton
2" x 2"	1.02X1.02	0.61	20X20	eDT0202-X	eD2 1.02X1.02X0.61 2020 X	eM-22-BLK	2000 /carton
2" x 2"	1.07x1.55	0.33	20x16	eDT0238-X	eD2 1.07X1.55X0.33 2016 X	eM-22-BLK	2000 /carton
2" x 2"	1.07X1.55	0.51	10X10	eDT0198-X	eD2 1.07X1.55X0.51 1010 X	eM-22-BLK	2000 /carton
2" x 2"	1.10X1.30	0.60	16X16	eDT0203-X	eD2 1.10X1.30X0.60 1616 X	eM-22-BLK	2000 /carton
2" x 2"	1.1X1.3	0.35	10X10	eDT0218-X	eD2 1.10X1.30X0.35 1010 X	eM-22-BLK	2000 /carton
2" x 2"	1.10X1.47	0.8	14X16	eDT0067-X	eD2-1.10X1.47X0.80-1416-X	eM-22-BLK	2000 /carton
2" x 2"	1.21X1.15	0.85	16X16	eDT0161-X	eD2 1.21X1.15X0.85 1616 X	eM-22-BLK	2000 /carton
2" x 2"	1.21X1.15	0.65	16X16	eDT0168-X	eD2 1.21X1.15X0.65 1616 X	eM-22-BLK	2000 /carton
2" x 2"	1.22x2.10	0.62	10x10	eDT0226-X	eD2 1.22X2.10X0.62 1010 X	eM-153-BLK	2000 /carton
2" x 2"	1.23X0.83	0.7	15X16	eDT0187-X	eD2 1.23X0.83X0.70 1516 X	eM-22-BLK	2000 /carton
2" x 2"	1.27X1.25	0.35	20X20	eDT0213-X	eD2 1.27X1.25X0.35 2020 X	eM-22-BLK	2000 /carton
2" x 2"	1.27X1.55	0.35	10X10	eDT0212-X	eD2 1.27X1.55X0.35 1010 X	eM-22-BLK	2000 /carton
2" x 2"	1.38x1.88	0.33	11x10	eDT0234-X	eD2 1.38X1.88X0.33 1110 X	eM-153-BLK	2000 /carton
2" x 2"	1.40X0.89	0.51	24X19	eDT0064-X	eD2-1.40X0.89X0.51-2419-X	eM-22-BLK	2000 /carton
2" x 2"	1.43X1.0	0.8	15X18	eDT0103-X	eD2-1.43X1.0X0.8-1518-X	eM-22-BLK	2000 /carton
2" x 2"	1.4X1.4	0.34	12x12	eDT0224-X	eD2 1.40X1.40X0.34 1212 X	eM-153-BLK	2000 /carton
2" x 2"	1.4X1.4	0.61	20X20	eDT0179-X	eD2 1.40X1.40X0.61 2020 X	eM-22-BLK	2000 /carton

### Material code options: (-x in P/N):

Material	Code	SR	Material	Code	SR
Conductive PP	eM-01-BLK	10e4-10e5	ABS	eM-24	n/a
Conductive PP	eM-09-BLK	<10e6	Conductive PP	eM-37-BLK	10e4-10e6
Conductive PS	eP-16-BLK	10e4-10e7	Conductive PC	eM-153-BLK	10e5-10e9
Conductive PC	eM-22-BLK	10e4-10e5			

[RETURN TO TABLE OF CONTENTS](#)

## 2" X 2" TRAYS (continued)



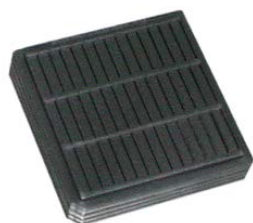
Tray size	Chip Size	Thick	Matrix	Order Code	Chip Tray Description	Material Options (-x)	Std Pack Quantity
2" x 2"	1.50x1.00	0.62	10x10	<b>eDT0232-X</b>	eD2 1.50X1.00X0.62 1010 X	eM-22-BLK	2000 /carton
2" x 2"	1.52X1.52	0.3	20X20	<b>eDT0157-X</b>	eD2 1.52X1.52X0.30 2020 X	eM-22-BLK	2000 /carton
2" x 2"	1.55X1.0	0.35	10X10	<b>eDT0216-X</b>	eD2 1.55X1.00X0.35 1010 X	eM-22-BLK	2000 /carton
2" x 2"	1.55X2.60	1.1	13X10	<b>eDT0086-X</b>	eD2-1.55X2.60X1.10-1310-X	eM-22-BLK	2000 /carton
2" x 2"	1.58X0.98	1.05	10X10	<b>eDT0180-X</b>	eD2 1.58X0.98X1.05 1010 X	eM-22-BLK	2000 /carton
2" x 2"	1.65X1.65	0.61	10X10	<b>eDT0061-X</b>	eD2-1.65X1.65X0.61-1010-X	eM-22-BLK	2000 /carton
2" x 2"	1.7X1.1	0.35	10X10	<b>eDT0220-X</b>	eD2 1.70X1.10X0.35 1010 X	eM-22-BLK	2000 /carton
2" x 2"	1.73X2.13	0.75	11X10	<b>eDT0169-X</b>	eD2 1.73X2.13X0.75 1110 X	eM-22-BLK	2000 /carton
2" x 2"	1.8X1.9	0.35	10X10	<b>eDT0217-X</b>	eD2 1.80X1.90X0.35 1010 X	eM-22-BLK	2000 /carton
2" x 2"	1.83X2.29	0.46	12X16	<b>eDT0063-X</b>	eD2-1.83X2.29X0.46-1216-X	eM-22-BLK	2000 /carton
2" x 2"	1.84X1.35	0.74	15X20	<b>eDT0208-X</b>	eD2 1.84X1.35X0.74 1520 X	eM-22-BLK	2000 /carton
2" x 2"	1.91X1.91	0.61	18X18	<b>eDT0204-X</b>	eD2 1.91X1.91X0.61 1818 X	eM-22-BLK	2000 /carton
2" x 2"	2.03X2.03	0.61	13X13	<b>eDT0207-X</b>	eD2 2.03X2.03X0.61 1313 X	eM-22-BLK	2000 /carton
2" x 2"	2.25X2.47	1.12	10X11	<b>eDT0072-X</b>	eD2-2.25X2.47X1.12-1011-X	eM-22-BLK	2000 /carton
2" x 2"	2.29X2.29	0.61	10X10	<b>eDT0051-X</b>	eD2-2.29X2.29X0.61-1010-X	eM-22-BLK	2000 /carton
2" x 2"	2.29X2.29	0.61	10X10	<b>eDT0182-X</b>	eD2 2.29x2.29x0.61 1010 R.1 X	eM-22-BLK	2000 /carton
2" x 2"	2.30X1.90	0.8	11X12	<b>eDT0101-X</b>	eD2-2.30X1.90X0.80-1112-X	eM-22-BLK, eM-24	2000 /carton
2" x 2"	2.30X3.80	1.1	8X10	<b>eDT0093-X</b>	eD2-2.30X3.80X1.10-0810-X	eM-22-BLK	2000 /carton
2" x 2"	2.34X2.83	1.1	11X10	<b>eDT0073-X</b>	eD2-2.34X2.83X1.10-1110-X	eM-22-BLK	2000 /carton
2" x 2"	2.36X3.75	1.1	8X11	<b>eDT0085-X</b>	eD2-2.36X3.75X1.10-0811-X	eM-22-BLK	2000 /carton
2" x 2"	2.74X1.37	1.1	9X14	<b>eDT0047-X</b>	eD2-2.74X1.37X1.10-0914-X	eM-22-BLK	2000 /carton
2" x 2"	2.74X3.18	1.1	9X9	<b>eDT0044-X</b>	eD2-2.74X3.18X1.1-0909-X	eM-22-BLK	2000 /carton

### Material code options: (-x in P/N):

Material	Code	SR	Material	Code	SR
Conductive PP	eM-01-BLK	10e4-10e5	ABS	eM-24	n/a
Conductive PP	eM-09-BLK	<10e6	Conductive PP	eM-37-BLK	10e4-10e6
Conductive PS	eP-16-BLK	10e4-10e7	Conductive PC	eM-153-BLK	10e5-10e9
Conductive PC	eM-22-BLK	10e4-10e5			

[RETURN TO TABLE OF CONTENTS](#)

## 2" X 2" TRAYS (continued)



Tray size	Chip Size	Thick	Matrix	Order Code	Chip Tray Description	Material Options (-x)	Std Pack Quantity
2" x 2"	2.79X1.98	0.51	11X14	<b>eDT0185-X</b>	eD2 2.79X1.98X0.51 1114 X	eM-22-BLK	2000 /carton
2" x 2"	2.8X2.8	0.9	10X10	<b>eDT0015-X</b>	eD2-2.8-2.8X0.9-1010-X	eM-22-BLK	2000 /carton
2" x 2"	2.80X3.40	0.8	10X9	<b>eDT0094-X</b>	eD2-2.80X3.40X0.80-1009-X	eM-22-BLK, eM-24	2000 /carton
2" x 2"	2.8X4.07	1.1	9X8	<b>eDT0046-X</b>	eD2-2.8X4.07X1.1-0908-X	eM-22-BLK	2000 /carton
2" x 2"	2.92X1.82	0.9	10X13	<b>eDT0129-X</b>	eD2 2.92X1.82X0.90 1013 X	eM-22-BLK	2000 /carton
2" x 2"	2.96X1.35	0.9	9X14	<b>eDT0117-X</b>	eD2 2.96X1.35X0.90 0914 X	eM-22-BLK	2000 /carton
2" x 2"	3.05X8.55	0.49	10X4	<b>eDT0125-X</b>	eD2 3.05X8.55X0.49 1004 X	eM-22-BLK	2000 /carton
2" x 2"	3.14X3.69	0.75	8X7	<b>eDT0170-X</b>	eD2 3.14X3.69X0.75 0807 X	eM-22-BLK	2000 /carton
2" x 2"	3.2X3.2	1.1	10X10	<b>eDT0126-X</b>	eD2 3.2X3.2X1.1 1010 X	eM-22-BLK	2000 /carton
2" x 2"	3.28X3.08	1.1	9X9	<b>eDT0045-X</b>	eD2-3.28X3.08X1.1-0909-X	eM-22-BLK	2000 /carton
2" x 2"	3.3X3.3	0.9	10X10	<b>eDT0016-X</b>	eD2-3.3X3.3X0.9-1010-X	eM-01-BLK	2000 /carton
2" x 2"	3.48X2.38	0.8	7X9	<b>eDT0173-X</b>	eD2 3.48X2.38X0.80 0709 X	eM-22-BLK	2000 /carton
2" x 2"	3.7X1.65	0.35	8X14	<b>eDT0211-X</b>	eD2 3.70X1.65X0.35 0814 X	eM-22-BLK	2000 /carton
2" x 2"	3.71X4.07	0.7	7x7	<b>eDT0221-X</b>	eD2 3.71X4.07X0.70 0707 X	eM-153-BLK	2000 /carton
2" x 2"	3.76X1.8	0.25	9X15	<b>eDT0206-X</b>	eD2 3.76X1.80X0.25 0915 X	eM-22-BLK	2000 /carton
2" x 2"	3.8X2.2	0.7	10X10	<b>eDT0017-X</b>	eD2-3.8X2.2X0.7-1010-X	eM-01-BLK	2000 /carton
2" x 2"	3.89X1.85	0.79	17X9	<b>eDT0030-X</b>	eD2-3.89X1.85X0.79-1709	eP16,eM-22-BLK	2000 /carton
2" x 2"	4.08x6.52	0.58	7x5	<b>eDT0231-X</b>	eD2 4.08X6.52X0.58 0705 X	eM-153-BLK	2000 /carton
2" x 2"	4.1x5.63	0.58	7x5	<b>eDT0229-X</b>	eD2 4.10X5.63X0.58 0705 X	eM-153-BLK	2000 /carton
2" x 2"	4.11X2.90	0.8	7X9	<b>eDT0172-X</b>	eD2 4.11X2.90X0.80 0709 X	eM-22-BLK	2000 /carton
2" x 2"	4.3X2.3	0.35	7X10	<b>eDT0219-X</b>	eD2 4.30X2.30X0.35 0710 X	eM-22-BLK	2000 /carton
2" x 2"	4.46X2.55	0.66	8X14	<b>eDT0177-X</b>	eD2 4.46X2.55X0.66 0814 X	eM-22-BLK	2000 /carton

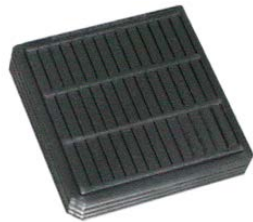
### Material code options: (-x in P/N):

Material	Code	SR	Material	Code	SR
Conductive PP	eM-01-BLK	10e4-10e5	ABS	eM-24	n/a
Conductive PP	eM-09-BLK	<10e6	Conductive PP	eM-37-BLK	10e4-10e6
Conductive PS	eP-16-BLK	10e4-10e7	Conductive PC	eM-153-BLK	10e5-10e9
Conductive PC	eM-22-BLK	10e4-10e5			

[RETURN TO TABLE OF CONTENTS](#)



## 2" X 2" TRAYS (continued)



Tray size	Chip Size	Thick	Matrix	Order Code	Chip Tray Description	Material Options (-x)	Std Pack Quantity
2" x 2"	4.46X2.55	0.66	8X14	<b>eDT0200-X</b>	eD2 4.46X2.55X0.66 0814 R.1 X	eM-22-BLK	2000 /carton
2" x 2"	4.50x3.10	0.75	6x7	<b>eDT0225-X</b>	eD2 4.50X3.10X0.75 0607 X	eM-22-BLK	2000 /carton
2" x 2"	4.52X4.12	0.58	7x7	<b>eDT0223-X</b>	eD2 4.52X4.12X0.58 0707 X	eM-153-BLK	2000 /carton
2" x 2"	4.53X4.53	0.75	6X6	<b>eDT0186-X</b>	eD2 4.53X4.53X0.75 0606 X	eM-22-BLK	2000 /carton
2" x 2"	4.59X5.91	0.85	7X5	<b>eDT0048-X</b>	eD2 4.59X5.91X0.85 0705 X	eM-22-BLK	2000 /carton
2" x 2"	4.74X2.35	1.1	7X10	<b>eDT0082-X</b>	eD2 4.74X2.35X1.10 0710 X	eM-22-BLK	2000 /carton
2" x 2"	5.08X13.46	0.76	3X7	<b>eDT0062-X</b>	eD2 5.08X13.46X0.76 0307 X	eM-22-BLK	2000 /carton
2" x 2"	5.15X1.15	1.8	10X6	<b>eDT0007-X</b>	eD2-5.115X1.15X1.8-1006-X	eM-09-BLK	2000 /carton
2" x 2"	5.15X11.5	1.8	5x3	<b>eDT0113-X</b>	eD2 5.15X11.50X1.80 0503 X	eM-22-BLK	2000 /carton
2" x 2"	5.30X5.30	0.9	6X6	<b>eDT0049-X</b>	eD2 5.30X5.30X0.9 0606 X	eM-22-BLK	2000 /carton
2" x 2"	5.75X2.36	1.1	5X11	<b>eDT0081-X</b>	eD2 5.75X2.36X1.10 0511 X	eM-22-BLK	2000 /carton
2" x 2"	6.35X6.35	0.61	6X6	<b>eDT0060-X</b>	eD2 6.35X6.35X0.61 0606 X	eM-22-BLK	2000 /carton
2" x 2"	6.80X2.30	1.1	5X10	<b>eDT0098-X</b>	eD2 6.80X2.30X1.10 0510 X	eM-22-BLK	2000 /carton
2" x 2"	6.87X2.92	0.48	5X9	<b>eDT0188-X</b>	eD2 6.87X2.92X0.48 0509 X	eM-22-BLK	2000 /carton
2" x 2"	8.55X2.95	0.49	4X10	<b>eDT0119-X</b>	eD2 8.55X2.95X0.49 0410 X	eM-22-BLK	2000 /carton
2" x 2"	9.8X2.8	0.55	11X4	<b>eDT0022-X</b>	eD2-9.8X2.8X0.55-1104-X	eM-24	2000 /carton
2" x 2"	12.8X2.39	0.9	14X3	<b>eDT0002-X</b>	eD2-12.8X2.39X0.9-1403-X	eM-01-BLK	2000 /carton
2" x 2"	13X11	0.8	2X3	<b>eDT0010-X</b>	eD2-13X11X0.8-203-X	eM-01-BLK, eM-09	2000 /carton
2" x 2"	40X40	1.76	1X1	<b>eDT0043-X</b>	eD2-40X40X1.1-X	eM-22-BLK	2000 /carton

### Material code options: (-x in P/N):

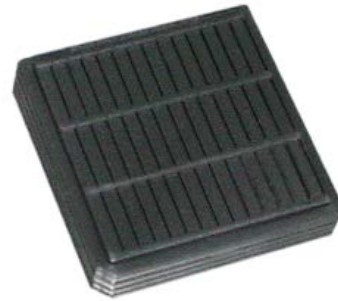
Material	Code	SR	Material	Code	SR
Conductive PP	eM-01-BLK	10e4-10e5	ABS	eM-24	n/a
Conductive PP	eM-09-BLK	<10e6	Conductive PP	eM-37-BLK	10e4-10e6
Conductive PS	eP-16-BLK	10e4-10e7	Conductive PC	eM-153-BLK	10e5-10e9
Conductive PC	eM-22-BLK	10e4-10e5			

[RETURN TO TABLE OF CONTENTS](#)





# CHIP TRAY SYSTEM (CONTINUED)



### 3" X 3" TRAYS

Tray size	Chip Size	Thick	Matrix	Order Code	Chip Tray Description	Material Options (-x)	Std Pack Quantity
3" x 3"	8.41X1.91	0.03	20X6	<b>eDT0069-X</b>	eD3-8.41X1.91X0.30-2006-X	eM-22-BLK	2000 /carton

### 4" X 4" TRAYS

Tray size	Chip Size	Thick	Matrix	Order Code	Chip Tray Description	Material Options (-x)	Std Pack Quantity
4" x 4"	1.25X1.15	0.3	20X20	<b>eDT0028-X</b>	eD4-1.25X1.15X0.3-2020-X	eM-22-BLK	2000 /carton
4" x 4"	2.55X2.55	1.85	20X20	<b>eDT0121-X</b>	eD4 2.55X2.55X1.85 2020-X	eM-22-BLK	2000 /carton
4" x 4"	2.70X2.20	1.00	21X24	<b>eDT0123-X</b>	eD4 2.70X2.20X1.00 2124 X	eM-22-BLK	2000 /carton
4" x 4"	3.41X3.16	1.21	10X10	<b>eDT0079-X</b>	eD4 3.41X3.16X1.21 1010 X	eM-22-BLK	2000 /carton
4" x 4"	4.21X4.21	0.75	15X15	<b>eDT0144-X</b>	eD4 4.21X4.21X0.75 1515 X	eM-22-BLK	2000 /carton
4" x 4"	4.95x2.08	0.50	12x24	<b>eDT0253-X</b>	eD4 4.95X2.08X0.50 1224 X	eM-22-BLK	2000 /carton
4" x 4"	6.5X6.5	0.7	11X11	<b>eDT0122-X</b>	eD4 6.5X6.5X0.7 1111 X	eM-22-BLK	2000 /carton
4" x 4"	6.66X4.16	1.55	15X5	<b>eDT0095-X</b>	eD4 6.66X4.16X1.55 1505-X	eM-22-BLK	2000 /carton
4" x 4"	8.15X5.65	1.62	13X05	<b>eDT0124-X</b>	eD4 8.15X5.65X1.62 1305-X	eM-22-BLK	2000 /carton
4" x 4"	13X13	2	6X6	<b>eDT0083-X</b>	eD4 13X13X2.0 0606-X	eM-22-BLK	2000 /carton

### Material code options: (-x in P/N):

Material	Code	SR	Material	Code	SR
Conductive PP	eM-01-BLK	10e4-10e5	ABS	eM-24	n/a
Conductive PP	eM-09-BLK	<10e6	Conductive PP	eM-37-BLK	10e4-10e6
Conductive PS	eP-16-BLK	10e4-10e7			
Conductive PC	eM-22-BLK	10e4-10e5			

[RETURN TO TABLE OF CONTENTS](#)



## Chip Tray Covers:



1 Piece Clip



2 Piece Clip



Spring Box

### Material code options: (-x in P/N):

Material	Code	SR
Conductive PP	eM-01-BLK	10e4-10e5
ABS	eM-24	N/A
CFPP	eM-46-BLK	10e4-10e10
Anti-static spun PO(Tyvek®)	eM-03-A-WHT	10e6-10e11

Tray Size & Function	Thick	Matrix	Order Code	Chip Tray Description	Std Pack Quantity
2" Cover	n/a	n/a	<b>eDT0001-eM-01-BLK</b>	eD2-COVER(1)-eM-01-BLK	2000 / carton
2" Cover	n/a	n/a	<b>eDT0026-eM-37</b>	eD2-COVER(1)-eM-37	2000 / carton
2" Cover	n/a	n/a	<b>eDT0027-eM-22-BLK</b>	eD2-COVER(1)-eM-22-BLK	2000 / carton
2" Cover	n/a	n/a	<b>eDT0025-eM-01-BLK</b>	eD2-COVER(3)-eM-01-BLK	2000 / carton
3" Cover	n/a	n/a	<b>eDT0070-x</b>	eD3-Cover-X	2000 / carton
4" Cover	n/a	n/a	<b>eDT0080-x</b>	eD4-Cover(3)-X	2000 / carton

## Chip Tray Accessories:

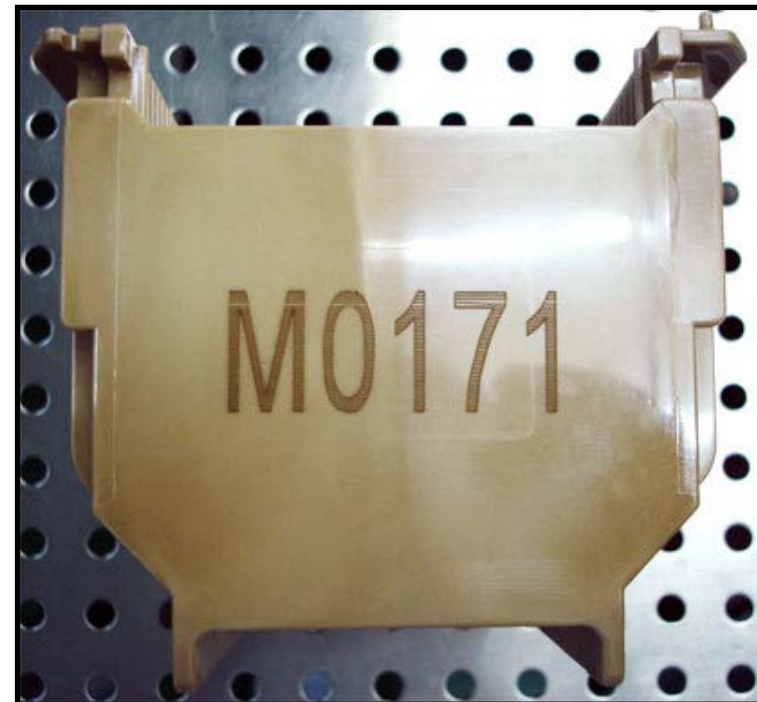
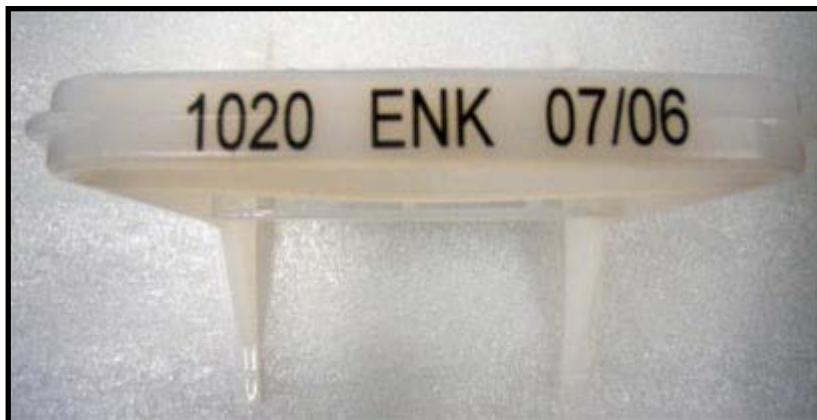
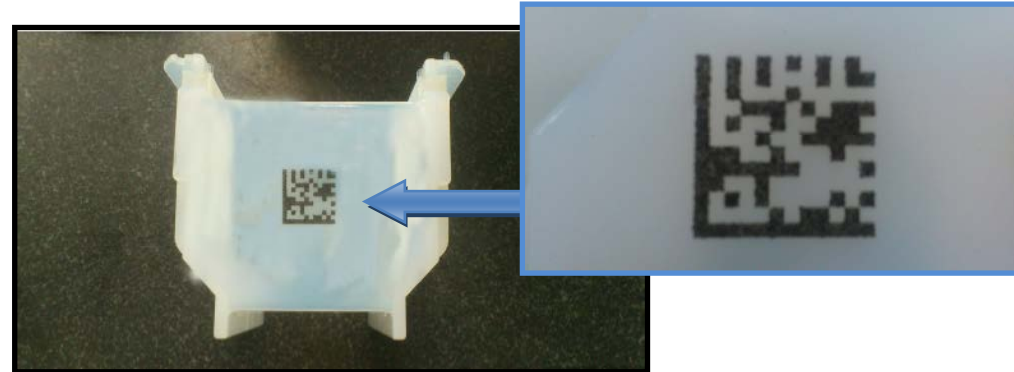
Tray Size & Function	STYLE	Capacity	Order Code	Description	Std Pack Quantity
<b>CLIPS:</b>					
2" Clip	1 Piece Clip	2	<b>eEC0013-eM-01-BLK</b>	eD2-CLIP2-R.1-eM-01-BLK	2500 / carton
2" Clip	1 Piece Clip	2	<b>eEC0026-eM-24</b>	eD2-CLIP2-R.1-eM-24	2500 / carton
2" Clip	1 Piece Clip	2	<b>eEC0013-eM-46-BLK</b>	eD2-CLIP2-R.1-eM-46-BLK	2500 / carton
2" Clip	2 Piece Clip	2	<b>eEC0011-eM-01-BLK</b>	eD2-CLIP2-eM-01-BLK	2000 / carton
2" Clip	2 Piece Clip	6	<b>eEC0010-eM-01-BLK</b>	eD2-CLIP6-eM-01-BLK	2000 / carton
2" Clip	2 Piece Clip	11	<b>eEC0009-eM-01-BLK</b>	eD2-CLIP11-eM-01-BLK	2000 / carton
3" Clip	2 Piece Clip	6	<b>eEC0021-eM-01-BLK</b>	eD3-CLIP6-eM-01-BLK	2000 / carton
4" Clip	1 Piece Clip	2	<b>eEC0024-eM-01-BLK</b>	eD4-CLIP2-eM-01-BLK	2500 / carton
4" Clip	2 Piece Clip	6	<b>eEC0023-eM-01-BLK</b>	eD4-CLIP6-eM-01-BLK	2000 / carton
2" Spring Box	Spring Box	6	<b>eEC0033-eM-01-BLK</b>	eD2-EC06-R.1-eM-01-BLK	2000 / carton
2" Spring Box	Spring Box	11	<b>eEC0012-eM-01-BLK</b>	eD2-EC11-eM-01-BLK	2000 / carton
<b>INTERLEAF:</b>					
2" Interleaf	Interleaf	n/a	<b>eIL0012-eM-03-A-WHT</b>	eIL2-44.5x44.5-0.16-eM-03-A-WHT	10K /carton
2" Interleaf	Interleaf	n/a	<b>eIL0020-eM-03-A-WHT</b>	eIL2-45.72x45.72-0.16-eM-03-A-WHT	10K /carton
4" Interleaf	Interleaf	n/a	<b>eIL0088-eM-03-A-WHT</b>	eIL4-90.8x90.8-0.16-eM-03-A-WHT	10K /carton
4" Interleaf	Interleaf	n/a	<b>eIL0103-eM-20-BLK</b>	eIL4-90.8x90.8-0.07-eM-20-BLK	10K /carton

[RETURN TO TABLE OF CONTENTS](#)



## Custom Laser Markings now available on most ePAK Wafer Products.

- Serialized Alpha Numeric Codes
- Part numbers
- Serial numbers
- QR codes



[RETURN TO TABLE OF CONTENTS](#)



# RETICLE BOX



- Front snap lock mechanism for easy box closure
- Integrated hinge set for easy operator opening

## Reticle Box:

ePAK Order Code	ePAK Description	Std Pack Quantity
eWB0005-eM-12	ePM-126-3-eM-12	20 /carton
eWB0034-eM-34	ePM-126-2-eM-34	20 /carton

## Material code info: (-x in P/N):

Material	Code	SR
Clear PC	eM-12-TRA	n/a
ESD PP	eM-34-BLK	10e6-10e10



[RETURN TO TABLE OF CONTENTS](#)

**For Wafer Canisters:**

Wafer Canister Size	ePAK Order Code	ePAK Overpak Description	Material offered	# of Canisters protected per set	Std Pack Quantity
6" eLX style R.1 (small body)	<b>eVT0734-x</b>	eV15-6-4-x	eM-21-CLR	4 pcs	15/Box
6" eLX style R.1 (small body)	<b>eVT02441-x</b>	eV15-eWB0086-4-R.1-x	eM-26-CLR	4 pcs	10/Box
6" Tall eLX style (eWB0435)	<b>mVT2351-x</b>	eV20-eWB0435-4-x	eM-26-NAT	4 pcs	20/Box
6" eLX style R.1 (small body)	<b>eVT2472-x</b>	eV15-eCT-LX6/150-4-44-R.1-X	eM-26-NAT	1pcs	35/Box
6" & 8" eLX style	<b>eVT0334-x</b>	eV-6/8-4-x	eM-31/eM-21-CLR	4 pcs	15/Box
8" Standard Canister (eWB0075)	<b>eVT1639-x</b>	eV15-TI8/200-4-x	eM-26-NAT	4 pcs	10/Box
8" Tall eLX style (eWB0383)	<b>eVT1787-x</b>	eV18-eWB0383-2-x	eM-26-NAT	2 pcs	25/Box
8" Tall eLX styles (eWB0383) & (eWB0516)	<b>eVT1785-x</b>	eV18-eWB0383-4-x	eM-26-NAT	4 pcs	10/Box
eCT-152-26-x	<b>eVT0700-x</b>	eV12-eCT-152-4-x	eM-21-CLR	4 pcs	50/Box
***12" eLX style	<b>eVT0285-x</b>	eV15-12-1-x	eM-21-CLR	1 pcs	2/Box
12" Tall eLX style (eWB0371)	<b>eVT1843-x</b>	eV18-eCT-LX12/300-71-R.2-x	eM-26-NAT	1 pcs	20/Box
12" Tall eLX style (eWB0371)	<b>eVT1973-x</b>	eV18-eCT-LX12/300-71-R.3-x	eM-26-NAT	2 pcs	15/Box
12" Tall eLX style (eWB0371)	<b>eVT1835-x</b>	eV15-eCT-LX12/300-71-X	eM-26-NAT	1pcs	20/Box
450mm	<b>eVT1553-x</b>	eV18-eCT-450-0.7-x	eM-26-NAT	1 pcs	10/Box



**For Wafer Jars:**

Wafer Jar Size	ePAK Order Code	ePAK Overpak Description	Material offered	# of Jars protected per set	Std Pack Quantity
4"x0.9"	<b>eVT0418-x</b>	eV12-4x0.9-6-x	eM-20-BLK/eM-21-CLR	6 pcs	40/Box
4"x1.2"	<b>eVT0419-x</b>	eV12-4x1.3-6-x	eM-20-BLK/eM-21-CLR	6 pcs	40/Box
4"x2.4"	<b>eVT0554-x</b>	eV12-4x2.4-1-x	eM-20-BLK/eM-21-CLR	1 pcs	20/Box
4"x2.4"	<b>eVT0433-x</b>	eV12-4x2.4-4-x	eM-20-BLK/eM-21-CLR	4 pcs	40/Box
5"x1.5"	<b>eVT0807-x</b>	eV12-5x1.5-4-x	eM-21-CLR	4 pcs	20/Box
6"x0.8"	<b>eVT1389-x</b>	eV12-6x0.8-5-x	eM-20-BLK/eM-21-CLR	5 pcs	40/Box
6"x1.5"	<b>eVT0265-x</b>	eV12-6x1.5-2-x	eM-21-CLR	2 pcs	40/Box
6"x1.5"	<b>eVT0266-x</b>	eV12-6x1.5-4-x	eM-21-CLR	4 pcs	40/Box
8"x2"	<b>eVT0300-x</b>	eV12-8x2-4-x	eM-21-CLR	4 pcs	20/Box



**Material code options: (-x in P/N):**

Material	Code	SR
Proprietary conductive PS	eM-20-BLK	10e4-10e11
Clear PS	eM-21-CLR	n/a
PP	eM-26-NAT	n/a
HIPS	eM-31-BLK or -WHT	n/a

[RETURN TO TABLE OF CONTENTS](#)



### For Wafer Shipping Boxes:

Designed For Product	ePAK Order Code	ePAK Overpak Description	Material offered	Protected per set	Std Pack Quantity
eMS-2/50-25-x	<b>eVT0487-x</b>	eV12-2/50-25-x	eM-20-BLK/eM-21-CLR	8 pcs	50/Box
100mm (4") ePRO I	<b>eVT0571-x</b>	eV18-4/100-OVERPAK-1-x	eM-20/eM-21/eM-26/eM-31	6 pcs	20/Box
100mm (4") ePRO II/III	<b>eVT1612-eM-26-NAT</b>	eV18-4 ePRO II and ePRO III-6-eM-26-NAT	eM-26-NAT	6 pcs	20/Box
125mm (5") ePRO II	<b>eVT1092-eM-26-NAT</b>	eV18-ePROII-5/125-OVERPAK-6-eM-26-NAT	eM-26-NAT	6 pcs	20/Box
150mm (6") ePRO I	<b>eVT0575-x</b>	eV18-6/150-OVERPAK-1-x	eM-20/eM-21/eM-26/eM-31	4 pcs	20/Box
150mm (6") ePRO II/III	<b>eVT1653-eM-26-NAT</b>	eV18-6" ePROII and ePROIII-2-eM-26-NAT	eM-26-NAT	2 pcs	20/Box
150mm (6") ePRO II/III	<b>eVT1413-eM-26-NAT</b>	eV18-6" ePROII and ePROIII-4-eM-26-NAT	eM-26-NAT	4 pcs	20/Box
150mm (6") ePRO II	<b>eVT1348-eM-26-NAT</b>	eV18-ePROII-6/150-OVERPAK-6-eM-26-NAT	eM-26-NAT	6 pcs	20/Box
200mm (8") ePRO I only	<b>eVT0616-x</b>	eV18-8/200-OVERPAK-1-x	ALL	2 pcs	20/Box
200mm (8") ePRO I only	<b>eVT0691-x</b>	eV18-8/200-OVERPAK-R.1-x	eM-20/eM-21/eM-26/eM-31	2 pcs	20/Box
200mm (8") ePRO II/III	<b>eVT1535-x</b>	eV18-8" ePROII and ePROIII-2-X	eM-26-NAT	2 pcs	15/Box
200mm ULTRAPAK* & ePRO III	<b>eVT0703-x</b>	eV-ULTRAPAKS-x	eM-25-CLR/eM-26-NAT	2 pcs	50/Box
200mm ULTRAPAK* & ePRO III	<b>eVT2273-x</b>	eV18-8" ePRO II and ePRO III-1-X	eM-26-NAT	1 pcs	20/Box
200mm (8") ePRO II/III	<b>eVT2465-x</b>	eV15-8" ePRO II and ePRO III-1-X	eM-26-NAT	1pcs	20/Box
200mm (8") ePRO II/III	<b>eVT2492-x</b>	eV18-6" ePRO II and ePRO III-1-X	eM-26-NAT	1pcs	40/Box

\*Ultrapak® is a registered trademark of EMPAK, Inc.

### Material code options: (-x in P/N):

Material	Code	SR
Proprietary conductive PS	eM-20-BLK	10e4-10e11
Clear PS	eM-21-CLR	n/a
Clear A/S coated APET	eM-25-CLR	10e7-10e11
PP	eM-26-NAT	n/a
HIPS	eM-31-BLK or -WHT	n/a



[RETURN TO TABLE OF CONTENTS](#)



### For FOSB:

Wafer size	ePAK Order Code	ePAK Overpak Description	Material offered	Shippers protected per set	Std Pack Quantity
300mm	<b>eVT0654-x</b>	eV18-12-FOSB-COVER-x	eM-21-CLR/eM-26-NAT	1 Pcs	20/Box
	<b>eVT0655-x</b>	eV18-12-FOSB-BASE-x	eM-21-CLR/eM-26-NAT	1 Pcs	20/Box
300mm	<b>eVT1588-x</b>	eV18-12-FOSB-BASE-R.1-x	eM-21-CLR/eM-26-NAT	1 Pcs	20/Box
300mm	<b>eVT1822-x</b>	eV18-MW-971-R.2-X	eM-21-CLR/eM-26-NAT	1 Pcs	25/Box
	<b>eVT1823-x</b>	eV18-MW-972-R.2-X	eM-21-CLR/eM-26-NAT	1 Pcs	25/Box
	<b>eVT0933-x</b>	eV18-MW-971-R1-x	eM-26-WHT/eM-31-BLK	1 Pcs	20/Box
	<b>eVT0934-x</b>	eV18-MW-972-R1-X	eM-26-WHT/eM-31-BLK	1 Pcs	20/Box

### For Flex Frame Shipping Box:

Designed For Product	ePAK Order Code	ePAK Overpak Description	Material offered	Canisters protected per set	Std Pack Quantity
150mm (6") Flex Frame Shipper	<b>eVT1295-x</b>	eV18-eFS6-150-25-R.1-OVERPAK-1-x	eM-20-BLK/eM-21-CLR eM-26-NAT/eM-31	1 Pcs	20/Box
150mm (6") Flex Frame Shipper	<b>eVT1662-x</b>	eV18-eFS6-150-25-R.1-OVERPAK-R.2-x	eM-26-NAT	1 Pcs	40/Box
200mm (8") Flex Frame Shipper	<b>eVT1664-x</b>	eV18-eFS8-200-25-R.1-OVERPAK-x	eM-26-NAT	1 Pcs	30/Box
200mm (8") Flex Frame shipper	<b>eVT2397-x</b>	eV18-eWB0152-2-X	eM-26-NAT	2 pcs	20/Box
200mm (8") Flex Frame Shipper	<b>eVT2386-x</b>	eV18-eWB0591-1-X	eM-26-NAT	1 Pcs	20/Box

### For Flex Frame Canisters:

Designed For Product	ePAK Order Code	ePAK Overpak Description	Material offered	Canisters protected per set	Std Pack Quantity
150mm(6")Flex Frame Canister(eWB0323)	<b>eVT1981-x</b>	eV15-eFSC6-150-40-R.1-Overpak-X	eM-26-NAT	1 Pcs	25/Box
200mm (8") Flex Frame Canister	<b>eVT1697-x</b>	eV15-10.8-1-x	eM-26-NAT	1 Pcs	20/Box
200mm(8")Flex Frame Canister(eWB0587)	<b>eVT2387-x</b>	eV15-eWB0587-1-X	eM-26-NAT	1 Pcs	25/Box
300mm (12") Flex Frame Shipper	<b>eVT1661-x</b>	eV18-eFS12-300-13-OVERPAK-x	eM-26-NAT	1 Pcs	25/Box
300mm (12") Flex Frame canister	<b>eVT1935-x</b>	eV18-12"FFC-OVERPACK-x	eM-26-NAT	1 Pcs	20/Box

### Material code options: (-x in P/N):

Material	Code	SR
Proprietary conductive PS	eM-20-BLK	10e4-10e11
Clear PS	eM-21-CLR	n/a
PP	eM-26-NAT	n/a
HIPS	eM-31-BLK or -WHT	n/a

[RETURN TO TABLE OF CONTENTS](#)

## Plastic Clean Room Bags – (Clear LDPE bags- open on one side)

Order Code	Bag Description	For ePAK Products:	Std Pack Quantity
<b>eM-35 (LDPE) Material:</b>			
eOP0095-1-eM-35	eBAG-140x280x0.06-eM-35		500pcs / carton
eOP0095-2-eM-35	eBAG-200x360x0.10-eM-35		500pcs / carton
eOP0095-3-eM-35	eBAG-200x360x0.15-eM-35		500pcs / carton
eOP0095-4-eM-35	eBAG-205x330x0.06-eM-35		500pcs / carton
eOP0095-5-eM-35	eBAG-230x270x0.06-eM-35	eJR-170-38-X, eCT-152-26-x, eCT6-150-0.7-x, eJR6-150-20-Base-X	500pcs / carton
eOP0095-6-eM-35	eBAG-230x360x0.06-eM-35		500pcs / carton
eOP0095-7-eM-35	eBAG-230x420x0.06-eM-35	eCT5-125-X	500pcs / carton
eOP0095-8-eM-35	eBAG-255x155x0.06-eM-35		500pcs / carton
eOP0095-9-eM-35	eBAG-280x310x0.06-eM-35	eCT8-200-0.7-X, eCT6-150-X, eJR-167-76-X, eJR-167-76-X	500pcs / carton
eOP0095-10-eM-35	eBAG-280x580x0.08-eM-35	eMS-3/76-25-x	500pcs / carton
eOP0095-11-eM-35	eBAG-280x650x0.08-eM-35	eMS-4/100-10-x	500pcs / carton
eOP0095-12-eM-35	eBAG-280x650x0.06-eM-35		500pcs / carton
eOP0095-13-eM-35	eBAG-300x360x0.06-eM-35	eJR-235-51-X, eJR8-200-23-Base-X	500pcs / carton
eOP0095-14-eM-35	eBAG-310x780x0.08-eM-35	eMS-4/100-25-x	500pcs / carton
eOP0095-15-eM-35	eBAG-330x360x0.06-eM-35	eCT-LX8/200-4-44-X, eCT-LX6/150-4-44-X	500pcs / carton
eOP0095-16-eM-35	eBAG-360x550x0.10-eM-35	For 8" clam shell	500pcs / carton
eOP0095-17-eM-35	eBAG-360x650x0.06-eM-35		500pcs / carton
eOP0095-18-eM-35	eBAG-368x863x0.08-eM-35		500pcs / carton
eOP0095-19-eM-35	eBAG-370x400x0.06-eM-35	eMS-2/50-25-x, eMS-3/76-25-x, ePB-2/50-25-x, ePB-3/76-25-x	500pcs / carton
eOP0095-20-eM-35	eBAG-406x508x0.06-eM-35		500pcs / carton
eOP0095-21-eM-35	eBAG-406x508x0.08-eM-35		500pcs / carton
eOP0095-22-eM-35	eBAG-410x460x0.06-eM-35		500pcs / carton
eOP0095-23-eM-35	eBAG-410x510x0.06-eM-35	eCT2-50-x, eCT-LX12/300-4-44-x.	500pcs / carton
eOP0095-24-eM-35	eBAG-445x876x0.06-eM-35		500pcs / carton
eOP0095-25-eM-35	eBAG-450x510x0.06-eM-35		500pcs / carton
eOP0095-26-eM-35	eBAG-495x533x0.06-eM-35		500pcs / carton
eOP0095-27-eM-35	eBAG-495x615x0.06-eM-35	For 8" ePRO inside bag	500pcs / carton
eOP0095-28-eM-35	eBAG-635x502x0.08-eM-35		500pcs / carton

\*Please confirm Description and Order Code information with your ePAK Representatives

### Material code info:

Material	Code	SR
Plastic Clean Room Bag (LDPE)	eM-35	n/a

### Bag Part Number Description:



[RETURN TO TABLE OF CONTENTS](#)





## Plastic Clean Room Bags – (Clear HDPE bags- open on one side)

Order Code	Bag Description	For ePAK Products:	Std Pack Quantity
<b>eM-52 (HDPE) Material:</b>			
eOP0129-1-eM-52	eBAG-230x500x0.08-eM-52	For 2" cassette	500pcs / carton
eOP0129-2-eM-52	eBAG-280x580x0.08-eM-52	For 2.5"/3" cassette	500pcs / carton
eOP0129-3-eM-52	eBAG-305x356x0.08-eM-52	ePRO-4/100-25-x	500pcs / carton
eOP0129-4-eM-52	eBAG-320x406x0.08-eM-52	ePRO-5/125-25-x	500pcs / carton
eOP0129-5-eM-52	eBAG-380x430x0.08-eM-52	ePRO-6/150-25-x	500pcs / carton
eOP0129-6-eM-52	eBAG-485x585x0.08-eM-52	ePRO-8/200-25-x	500pcs / carton
eOP0129-7-eM-52	eBAG-381x483x0.08-eM-52	6" Coinstyle Single Shippers	500pcs / carton
eOP0129-8-eM-52	eBAG-600x620x0.08-eM-52	450mm Single Shipper	100pcs / carton

*\*Please confirm Description and Order Code information with your ePAK Representatives*

### Material code info:

Material	Code	SR
Plastic Clean Room Bag (HDPE)	eM-52	n/a

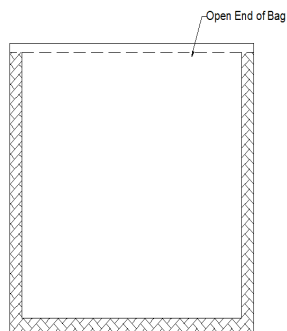
### Bag Part Number Description:



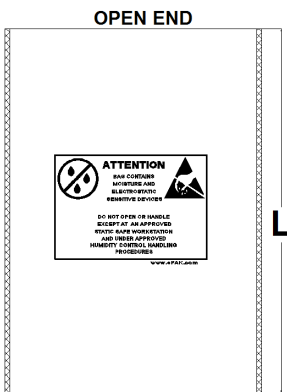
[RETURN TO TABLE OF CONTENTS](#)



### ESD/Moisture Barrier Bag - (Metalized PET+PET+CPE material)



eOP0116-eM-41



W (FOLDED)  
eOP0078-eM-41

#### eM-41 Material:

Order Code	Bag Description	For ePAK Products:	Std Pack Quantity
eOP0116-eM-41	eBAG-141x138x0.08-eM-41		500pcs / carton
eOP0116-2-eM-41	eBAG-171x168x0.08-eM-41		500pcs / carton
eOP0106-eM-41	eBAG-159x159x0.08-eM-41		500pcs / carton
eOP0078-1-eM-41	eBAG-160x200x0.08-eM-41	eJR4-100-20-x, eJR4-100-30-x	500pcs / carton
eOP0078-2-eM-41	eBAG-160x220x0.08-eM-41	eWB0040 and eWB0044	500pcs / carton
eOP0078-3-eM-41	eBAG-166x192x0.08-eM-41	eJR4-100-23-x, eJR4-100-32-x	500pcs / carton
eOP0078-4-eM-41	eBAG-180x230x0.08-eM-41	eJR4-100-49-x	500pcs / carton
eOP0078-5-eM-41	eBAG-195x230x0.08-eM-41	eJR4-100-49-X, eJR4-100-60.5-X	500pcs / carton
eOP0078-6-eM-41	eBAG-200x260x0.08-eM-41		500pcs / carton
eOP0078-7-eM-41	eBAG-200x300x0.08-eM-41		500pcs / carton
eOP0078-8-eM-41	eBAG-230x280x0.08-eM-41	eJR6-170-38-x	500pcs / carton
eOP0078-9-eM-41	eBAG-260x310x0.08-eM-41	eWB0086	500pcs / carton
eOP0078-10-eM-41	eBAG-280x330x0.08-eM-41	eCT-152-26-x	500pcs / carton
eOP0078-11-eM-41	eBAG-280x580x0.08-eM-41	eWB0029	500pcs / carton
eOP0078-12-eM-41	eBAG-280x650x0.08-eM-41	eWB0258	500pcs / carton
eOP0078-13-eM-41	eBAG-305x356x0.08-eM-41	ePRO-4/100-25-x	500pcs / carton
eOP0078-14-eM-41	eBAG-305x406x0.08-eM-41		500pcs / carton
eOP0078-15-eM-41	eBAG-310-360x0.08-eM-41	eCT-202-30-x, eJR-235-51-x	500pcs / carton
eOP0078-16-eM-41	eBAG-310x780x0.08-eM-41	For eWB0259	500pcs / carton
eOP0078-17-eM-41	eBAG-320x360x0.08-eM-41		500pcs / carton
eOP0078-18-eM-41	eBAG-320x406x0.08-eM-41	ePRO-5/125-25-x	500pcs / carton
eOP0078-19-eM-41	eBAG-330x380x0.08-eM-41	eCT-LX6/150-4-44-x, eCT-LX8/200-4-44-x, eWB0323	500pcs / carton
eOP0078-20-eM-41	eBAG-365x550x0.10-eM-41	8" clamshell	500pcs / carton
eOP0078-21-eM-41	eBAG-380x430x0.08-eM-41		500pcs / carton
eOP0078-22-eM-41	eBAG-390x460x0.08-eM-41	ePRO-6/150-25-x	500pcs / carton
eOP0078-23-eM-41	eBAG-420x500x0.08-eM-41	eCT-LX12/300-4-44-x,	500pcs / carton
eOP0078-24-eM-41	eBAG-460x520x0.08-eM-41		500pcs / carton
eOP0078-26-eM-41	eBAG-500x600x0.08-eM-41		500pcs / carton
eOP0078-27-eM-41	eBAG-508x635x0.08-eM-41		500pcs / carton
eOP0078-28-eM-41	eBAG-546x610x0.08-eM-41		500pcs / carton
eOP0078-29-eM-41	eBAG-813x813x0.08-eM-41		500pcs / carton
eOP0078-26-eM-41	eBAG-500x600x0.08-eM-41		500pcs / carton
eOP0078-26-eM-41	eBAG-500x600x0.08-eM-41		500pcs / carton

\*Please confirm Description and Order Code information with your ePAK Representatives

#### Material code info:

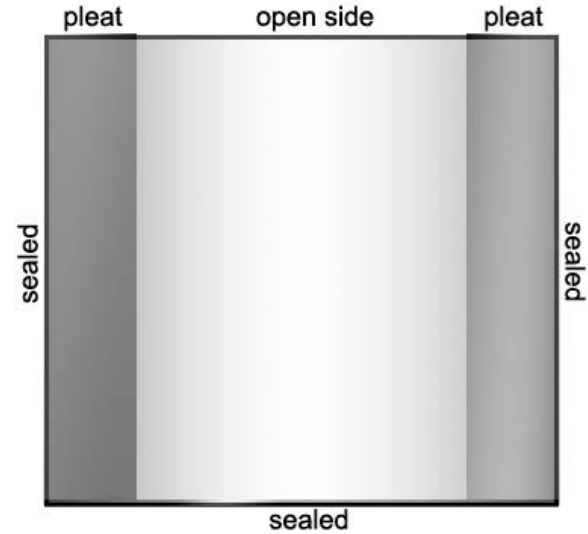
Material	Code	SR
ESD/Moisture Barrier Bag (Metalized PET+PET+CPE)	eM-41	10e6 -10e11

[RETURN TO TABLE OF CONTENTS](#)



# PLEATED PACKING BAGS

**-FOR VACUUM PACKING APPLICATIONS-**



**Pleated Bags:** Pleated on 2 sides

Order Code	Bag Description	Std Pack Quantity	For ePAK Products:
eOP0113-eM-35	eBAG-155x255x0.06-eM-35	500pcs/ carton	
eOP0113-eM-35	eBAG-152.4x228.6x0.06-eM-35	500pcs/ carton	
eOP0113-eM-52	eBAG-960x830x0.08-eM-52	500pcs/ carton	For FOSB

*\*Please confirm Description and Order Code information with your ePAK Representatives*

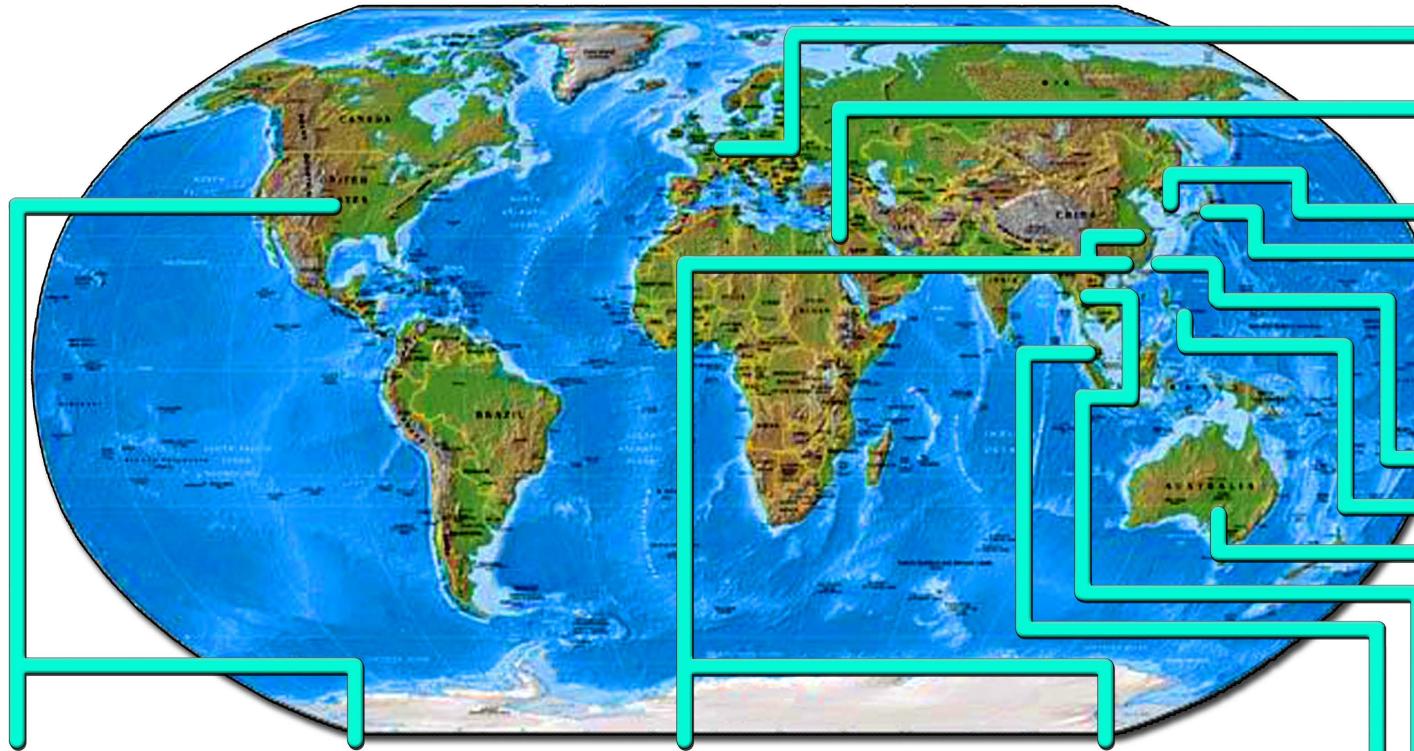
**Material code options:** (-x in P/N):

Material	Code	SR
Plastic Clean Room Bag (LDPE)	eM-35	n/a
Plastic Clean Room Bag (HDPE)	eM-52	n/a



[RETURN TO TABLE OF CONTENTS](#)

# WORLDWIDE LOCATIONS



**SPS-Europe**  
Europe  
Phone: +31 341 360590  
Fax: +31 341 360589

**M.Y.G. Tech**  
Israel  
Phone: +972-8 9760620  
Fax: +972-8-9760621

**ePAK Korea**  
Seoul, Korea  
Phone: +822-401-2627  
Fax: +822-401-2618

**Kanematsu Kangawa**  
Japan Head Office:  
Phone:(81)936610360  
Fax:(81)936618552

**ePAK Taiwan**  
Taipei, Taiwan  
Phone: +886-2-291-49591  
Fax: +886-2-291-49597

**ePAK Philippines**  
Manila, Philippines  
Phone: +63-908-815-8322  
Land: +63-49-302-5812

**ePAK International, Inc.**  
Austin, Texas, U.S.A.  
Phone: +1-512-231-8083  
Fax: +1-512-231-8183

**Redstone Technical**  
Colorado Springs, CO U.S.A.  
Phone: +1-719-445-8822

**ePAK Solutions (SZ) Co.,Ltd.**  
**ePAK Technologies (SZ) Co.,Ltd.**  
Shenzhen, China  
Phone: +86-755-3382-7888  
Fax: +86-755-2862-1452

**Anhui ePAK Precision Technologies Co.,Ltd.**  
Wuhu, Anhui, China  
Phone: +86-553-2675888  
Fax: +86-553-5628886

**ePAK Resources (S) Pte Ltd.**  
Singapore  
Phone: +65-6846-9908  
Fax: +65-6547-4269

**Litronics (S) Pte Ltd.**  
Singapore  
Phone: +65-6842-7889  
Fax: +65-6842-7229

**Koike (M) Sdn Bhd**  
Malaysia  
Phone: +603-31763923  
Fax: +603-31763923

**NSI(Thailand) Co., Ltd.**  
Thailand  
Phone: 02-663-3070-2  
Fax: 02-663-3073

**Jas Pak (S) Pte., Ltd.**  
Thailand  
Phone: +65 6481 0045  
Fax: +65 6483 0045

**MMRC Pty Ltd.**  
Australia  
Phone:+61-3-9885-1752  
Fax: +61-3-9885-2603



[RETURN TO TABLE OF CONTENTS](#)